

CHEROKEE®



SUMMER 2026

Uniforms for those who care for each other and all of us

Every body,
every shift,
every budget.

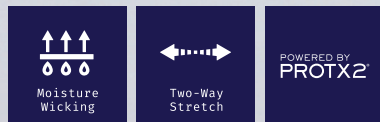
Cherokee unpacks an impressive arrangement for Summer, with glorious new shades and styles to accompany tried and true staples. A playful batch of prints for both Men and Women bring fun feels and vivid imagery to a standout lineup.



CHEROKEE

WORKWEAR ORIGINALS ULTRA

Cherokee Workwear Originals Ultra raises the bar for medical apparel, seamlessly blending quality, comfort and value in a fresh collection designed for modern healthcare professionals. With advanced fabrics and innovative details, Ultra delivers scrubs that go above and beyond expectations.



CK778A

Unisex Tuck-In V-Neck Top

- Unisex Tuck-In V-Neck Top
- Modern classic fit
- 1 Chest patch pocket
- Decorative topstitching

Core Color Sizes: *XXS-5XL* | 28"



CK00035A **NEW STYLE**

Men's Mid-Rise Jogger

- Modern classic fit
- Elastic waistband
- 4 pockets: 2 front patch pockets, 1 cargo patch pocket with pen slot, 1 back patch pocket
- Rib knit jogger cuffs

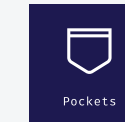
Core Color Sizes:

*R: XS-5XL** | 30.5"

S: S-3XL | 28"

T: S-2XL | 34"

*6XL is available in fewer colors, see the product guide for color offerings.



Four functional pockets—including a roomy cargo with pen slot—provide practical storage, reinforced by a woven logo detail for authentic Cherokee character.



Crafted from moisture-wicking fabric with PROTX2® technology, it stays breathable, fresh and ready for every shift.



CK953A

Women's 2-Pocket V-Neck Top

NEW COLOR
Rapture Rose

- Modern classic fit
- ID badge loop at neckline
- 2 Front patch pockets
- Side vents

Core color sizes: *XXS-5XL* / 26"
Fashion color sizes: *XS-3XL* / 26"

*6XL is available in fewer colors, see the product guide for color offerings.



CK954A

Women's 1-Pocket V-Neck Top

Core color sizes: *XXS-5XL* / 26"

- Modern classic fit
- ID badge loop at right yoke
- 1 Chest patch pocket
- Curved high-low hem



CK272A

Women's Straight Leg Cargo Pant

NEW COLOR
Rapture Rose

- Modern classic fit
- Elastic waistband
- Adjustable drawstring
- 4 Pockets: 2 front patch pockets, 2 cargo pockets

Core color sizes: *R: XXS-5XL* / 31"
P: XXS-2XL / 28.5"
T: XS-2XL / 34"
Fashion color sizes: *R: XS-3XL* / 31"
P: XS-2XL / 28.5"

*6XL is available in fewer colors, see the product guide for color offerings.



CK00034A **NEW STYLE**

Women's Mid-Rise Jogger

Core color sizes: *R: XXS-5XL* / 28.5"
P: XXS-2XL / 26", *T: XS-2XL* / 31.5"

- Modern classic fit
- Flat front waistband with elastic at back
- 5 Pockets: 2 front in-seam pockets, 1 cargo pocket with pen slot, 2 back patch pockets
- Rib-knit jogger cuffs

*6XL is available in fewer colors, see the product guide for color offerings.



CHEROKEE

ACHIEVE

Cherokee Achieve delivers off-duty comfort with on-the-clock performance, designed for long days that don't stop when your shift ends. Made with Comfort Pro™ Fabric—a soft, double-brushed performance knit with breathable 360° stretch—these styles feel like loungewear while standing up to the demands of real work. Clean, effortless silhouettes create a polished look that moves with you through every part of your day, from patient rounds to everything that comes after.



CK00037 NEW STYLE

Men's 3-Pocket V-Neck Top

- Modern classic fit
- ID badge loop at right shoulder
- 3 Pockets: 1 chest welt pocket, 2 front top-entry welt pockets

Core Color Sizes: *XXS-5XL* | 28"



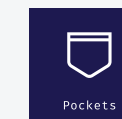
CK036

Men's Straight Leg Cargo Pant

- Modern classic fit
- Elastic waistband
- ID badge loop at waistband
- 5 pockets: 2 front pockets, 2 cargo patch pockets with pen slots, 1 back patch pocket

Core Color Sizes:

R: XS-5XL | 32"
S: XS-2XL | 29.5"
T: S-XL | 35"



Designed with three welt pockets for easy storage and quick access to your essentials, plus a pen bar tack for secure organization.



Meet Comfort Pro™ Fabric—our exclusive double-brushed performance knit that feels like your favorite lived-in sweats but works as hard as your most reliable scrubs. Breathable, soft, and structured with 360° stretch, it moves and rebounds with you for distraction-free comfort all day.

CK832

Women's 2-Pocket V-Neck Top

NEW COLOR
True Coral

- Modern classic fit
- ID badge loop at right shoulder
- 3 Pockets: 1 chest welt pocket, 2 front top-entry welt pockets

Core color sizes:

XXS-5XL | 26"

Fashion color sizes:

XS-3XL | 26"

CK096

Women's Straight Leg Cargo Pant

NEW COLOR
True Coral

- Modern classic fit
- Elastic waistband
- Adjustable drawstring
- 5 pockets: 2 front pockets, 2 cargo patch pockets with pen slots, 1 back patch pocket

Core color sizes:

R: XXS-5XL | 31"

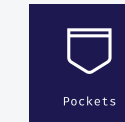
P: XXS-2XL | 28.5"

T: XS-XL | 34"

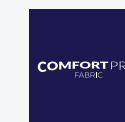
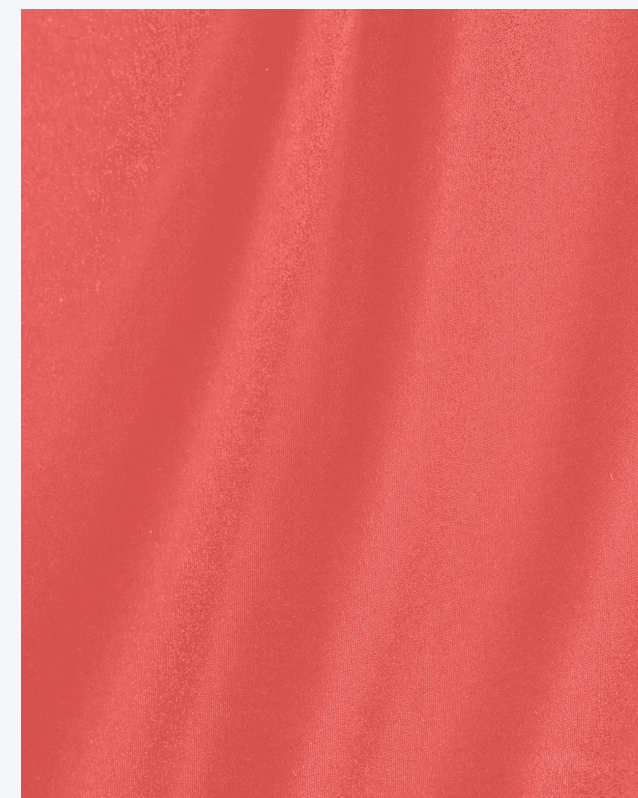
Fashion color sizes:

R: XS-3XL | 31"

P: XS-2XL | 28.5"



Designed with three welt pockets for easy storage and quick access to your essentials, plus a pen bar tack for secure organization.

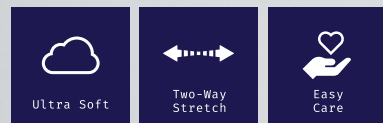


In soft, durable Comfort Pro™ knit fabric, this go-to scrub top gives you breathable 360-degree stretch with a plush, brushed feel inside and out.

CHEROKEE

WORKWEAR REVOLUTION

Cherokee Workwear Revolution elevates everyday scrubs with ultra-soft, durable two-way stretch designed for lasting comfort. Packed with performance-driven details and offered in inclusive sizing, it's a smart, budget-friendly option for both individuals and teams. Modern, reliable, and made to move, Revolution keeps up with every shift.





MOST POCKETS EVER

Every essential within reach - engineered with more pockets than any scrub you've worn before.



WW620

Women's 3-Pocket V-Neck Top

NEW COLOR
Cucumber CUCM

- Modern classic fit
- 2 Front patch pockets with additional pocket at right
- Side vents

Core color sizes: XXS-5XL* / 27"
Fashion color sizes: XS-3XL / 27"

*6XL is available in fewer colors, see the product guide for color offerings.



WW690

Men's 1-Pocket V-Neck Top

Core color sizes: XS-5XL* / 29"

- Modern classic fit
- 1 Chest patch pocket with pen slot
- Side vents



CK00002 NEW STYLE

Women's 12-Pocket Straight Leg Pant

NEW COLOR
Cucumber CUCM

- Modern classic fit
- 12 pockets: 2 front side-entry pockets, 1 front zip pocket at right, 1 front welt pocket at left, 1 coin pocket at left, 2 cargo patch pockets, 2 small cargo patch pockets with pen slot at right, 1 small cargo patch pocket at left, 2 back patch pockets

Core color sizes: R: XS-3XL / 31"
P: XS-2XL / 28.5"
Fashion color sizes: R: XS-3XL / 31"
P: XS-2XL / 28.5"



CK00001 NEW STYLE

Men's 12-Pocket Straight Leg Pant

Core color sizes: R: XS-3XL / 31"
S: S-3XL / 29.5"

- Modern classic fit
- 12 pockets: 2 front patch pockets, 2 front zip pockets, 2 cargo patch pockets, 1 small cargo patch pocket with pen slot at left, 1 cargo scissors pocket at left, 2 back inseam pockets, 2 back patch pockets

WW610

Women's 3-Pocket Mock-Wrap Top

NEW COLOR
Cucumber CUCM

- Modern classic fit
- 2 Front patch pockets with additional pocket at right
- Side vents

Core color sizes:

XXS-5XL* | 27"

Fashion color sizes:

XS-3XL | 27"

*6XL is available in fewer colors, see the product guide for color offerings.

WW115

Women's 5-Pocket Mid-Rise Jogger

NEW COLOR
Cucumber CUCM

- Modern classic fit
- Rib-knit elastic waistband
- Internal drawstring
- 5 Pockets: 2 front patch pockets, 2 layered cargo pockets at right, 1 back patch pocket

Core color sizes:

R: XXS-5XL | 28.5"

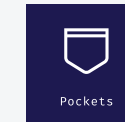
P: XXS-2XL | 26"

T: XS-2XL | 31.5"

Fashion color sizes:

R: XS-3XL | 28.5"

P: XS-2XL | 26"



Serious storage with a streamlined look. Built around a 12-pocket layout, this pant organizes tools, tech and small essentials so everything has a place and stays easy to reach.

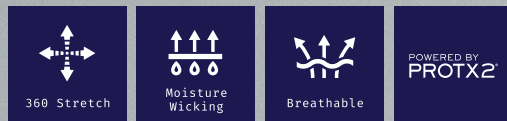


Made from ultra-soft, 2-way stretch fabric that's easy to care for, this Workwear Revolution standout combines storage, comfort and strength for every shift.

CHEROKEE

INFINITY PURSUIT

Cherokee Infinity Pursuit redefines scrubs with refined tailoring, athletic-inspired style, and performance-driven comfort designed to move with you through every part of your day. Its premium, breathable knit fabric delivers 360° stretch, moisture control, wrinkle recovery, and PROTX2® antimicrobial technology for odor-fighting freshness and lasting durability.





IN00037 **NEW STYLE**

Women's Crew-Neck Top

- Black BLKN
- Pewter PWTN
- Navy NAVN
- Royal ROYN
- NEW COLOR**
Tropical Pink TRPK

- Contemporary fit
- Contrast rib-knit trim at neckline
- Side vents

Core color sizes:
XXS-5XL | 25"
Fashion color sizes:
XS-3XL | 25"

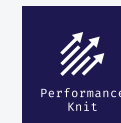
IN023A

Women's Mid-Rise Straight Leg Pant

- NEW COLOR**
Tropical Pink TRPK

- Contemporary fit
- Smooth elastic waistband with built-in utility strap
- Internal drawstring
- 4 Pockets: 2 front slant pockets, 1 cargo patch pocket, 1 back patch pocket

Core color sizes:
R: XXS-5XL | 30.5"
P: XXS-2XL | 27.5"
T: XS-2XL | 33.5"
Fashion color sizes:
R: XS-3XL | 30.5"
P: XS-XL | 27.5"



Stretch, comfort and staying power. Pursuit's premium, breathable knit fabric offers 360° stretch for freedom of movement, wrinkle recovery to keep you looking sharp and moisture control to keep you cool and dry. Plus, PROTX2® antimicrobial technology helps fight odors, prevent sweat stains and inhibits the growth of microorganisms that cause odor and fabric damage.



IN00033

Women's 2-Pockets V-Neck Top

NEW COLOR
Tropical Pink TRPK

- Contemporary fit
- Badge clip pocket at right shoulder
- 2 Front patch pockets
- Front darts

Core color sizes: *XXS-5XL* / 26"
Fashion color sizes: *XS-3XL* / 26"



IN024A

Women's Mid-Rise Jogger

NEW COLOR
Tropical Pink TRPK

- Contemporary fit
- Smooth elastic waistband with built-in utility strap
- Internal drawstring
- 5 Pockets: 2 front slant pockets, 2 cargo welt pocket, 1 back zipper pocket

Core color sizes: *R: XS-5XL* / 30.5"
P: XS-3XL / 28"
T: S-2XL / 33.5"
Fashion color sizes: *R: XS-3XL* / 30.5"



IN00034

Women's V-Neck Dolman Top

NEW COLOR
Tropical Pink TRPK

- Contemporary fit
- Rib-knit neckline
- 1 Chest zip pocket
- High-low dolphin hem

Core color sizes: *XXS-5XL* / 24"
Fashion color sizes: *XS-3XL* / 24"

IN00020 NEW STYLE

Men's 2-Pocket Crew-Neck Top

Black
BLKN

Pewter
PWTN

Navy
NAVN

Royal
ROYN

- Contemporary fit
- Contrast rib-knit trim at neckline
- 2 Front side-entry pockets
- Side vents

Core color sizes:
XS-5XL / 28"
Fashion color sizes:
XS-3XL / 28"

IN027A

Men's Mid-Rise Jogger

NEW COLOR
Olive OLVN

- Contemporary fit
- Smooth elastic waistband with built-in utility strap
- Internal drawstring
- 5 Pockets: 2 front slant pockets, 2 cargo welt pocket, 1 back zipper pocket

Core color sizes:
R: XS-5XL / 30.5"
P: XS-3XL / 28"
T: S-2XL / 33.5"
Fashion color sizes:
R: XS-3XL / 30.5"

*Olive is also available in IN00033, IN023A, and IN651A. Please reference the product guide for style color availability.



CHEROKEE

CHEROKEE

PRINTS

Cherokee Prints brings personality to your scrubs with a vibrant collection of playful patterns and bold designs. Crafted from soft, breathable fabric with a relaxed fit, these tops offer all-day comfort and easy care.

FABRIC: 52% Recycled Polyester, 40% Polyester, 8% Spandex

FABRIC: 80% Polyester, 20% Spandex



CK857 | WELLNESS ICONS (WNIS)

Size:
XS-2XL | 24.5"

Fabric:
52% Recycled Polyester
40% Polyester, 8% Spandex

CK856 | SMILE CROCODILE (SLCI)

Size:
XS-3XL | 26"

Fabric:
52% Recycled Polyester,
40% Polyester, 8% Spandex

CK857 | FURRY CUTE (FUTE)

Size:
XS-3XL | 26"

Fabric:
52% Recycled Polyester
40% Polyester, 8% Spandex

CK856 | CRUST A MOVE (CRTV)

Size:
XS-3XL | 26"

Fabric:
52% Recycled Polyester,
40% Polyester, 8% Spandex

CK857 | DOGGY DOODLE (DGDD)

Size:
XS-5XL | 26"

Fabric:
52% Recycled Polyester
40% Polyester, 8% Spandex

CK00010 | BRIGHTGEO (BRGO)

Size:
XS-3XL | 26"

Fabric:
80% Polyester, 20% Spandex

CK856 | BOBA PARTY (BBAP)



Size:
XS-5XL | 26"
Fabric:
52% Recycled Polyester,
40% Polyester, 8% Spandex

CK857 | FLAMAZING SKATERS (FKTR)



Size:
XS-5XL | 26"
Fabric:
52% Recycled Polyester
40% Polyester, 8% Spandex

CK856 | GROOVY GALAXY (GVGY)



Size:
XS-3XL | 26"
Fabric:
52% Recycled Polyester
40% Polyester, 8% Spandex

CK857 | SILLY GOOSE (SYGO)



Size:
XS-5XL | 26"
Fabric:
52% Recycled Polyester
40% Polyester, 8% Spandex

CK856 | RAINBOW (BRRW)



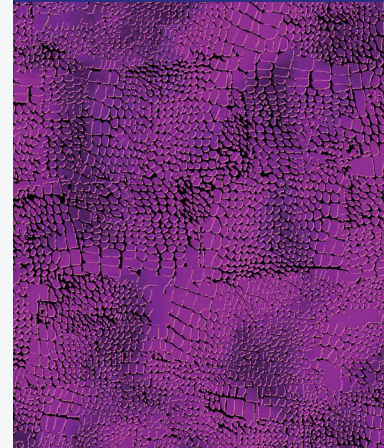
Size:
XS-5XL | 26"
Fabric:
52% Recycled Polyester
40% Polyester, 8% Spandex

CK857 | ACTIVE BUTTERFLY (ATBF)



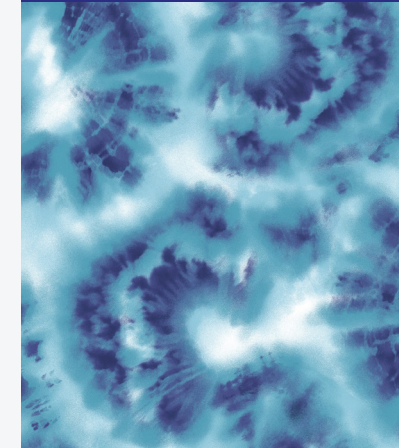
Size:
XS-5XL | 26"
Fabric:
52% Recycled Polyester
40% Polyester, 8% Spandex

CK609 | PRETTY PYTHON (PRTY)



Size:
XS-5XL | 26"
Fabric:
96% Polyester, 4% Spandex

TF797 | SALTWATER TIE DYE (STTD)



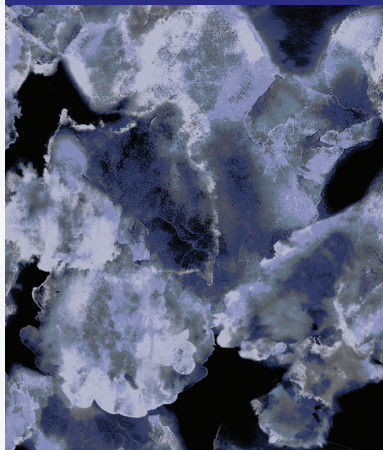
Size:
XS-2XL
Fabric:
96% Polyester, 4% Spandex

CK00010 | TIE DYE PETALS (TYPL)



Size:
XS-3XL | 26"
Fabric:
80% Polyester, 20% Spandex

CK691 | ICE COLD (ICCD)



Size:
XS-5XL | 28"
Fabric:
52% Recycled Polyester
40% Polyester, 8% Spandex

CHEROKEE

TOONIFORMS

Step into a world of fun and functionality with the **Tooniforms Collection by Cherokee**, designed for healthcare professionals who love expressing their personality. Playful, cartoon-inspired prints bring joy and comfort to your workday, lifting spirits whether you're caring for kids or simply adding a cheerful touch to your routine.

FABRIC: 52% Recycled Polyester, 40% Polyester, 8% Spandex



TF797 | HEAD SKYWARD (DMBB)



Size: XS-2XL | 24.5"
Fabric: 52% Recycled Polyester, 40% Polyester, 8% Spandex

WONDER WOMAN and all related characters and elements © & ™ DC

TF626 | ICONIC MICKEY (MKZI)



Size: XS-2XL | 24.5"
Fabric: 52% Recycled Polyester, 40% Polyester, 8% Spandex

WONDER WOMAN and all related characters and elements © & ™ DC

TF797 | PUPPY PILE (DAZP)



Size: XS-2XL | 24.5"
Fabric: 52% Recycled Polyester, 40% Polyester, 8% Spandex

WONDER WOMAN and all related characters and elements © & ™ DC

TF796 & TF513 | BLUEY ZONE (BYSP)



Size: XS-2XL | 24.5"
Fabric: 52% Recycled Polyester, 40% Polyester, 8% Spandex

WONDER WOMAN and all related characters and elements © & ™ DC

TF797 | BOW-TANICAL (ALWT)



Size: XS-2XL | 24.5"
Fabric: 52% Recycled Polyester, 40% Polyester, 8% Spandex

WONDER WOMAN and all related characters and elements © & ™ DC

TF796 | FANTASTIC NEMO (FNCT)



Size: XS-2XL | 24.5"
Fabric: 52% Recycled Polyester, 40% Polyester, 8% Spandex

WONDER WOMAN and all related characters and elements © & ™ DC

TF737 | MY BIG HEART (LKHf)




Size:
XXS-3XL | 36"

Fabric:
52% Recycled Polyester
40% Polyester, 8% Spandex

© Disney

TF797 | SUPERSTAR CELESTIAL (DMTS)




Size:
XS-3XL | 26"

Fabric:
52% Recycled Polyester
40% Polyester, 8% Spandex

WONDER WOMAN and all related characters and elements © & ™ DC

TF797 | TROPIC OF TWEETY (LTPW)






Size:
XS-3XL | 26"

Fabric:
52% Recycled Polyester
40% Polyester, 8% Spandex

LOONEY TUNES and all related characters and elements © & ™ Warner Bros Entertainment Inc. 2026

TF796 | GOOD DAY FEELING (SMWL)

Size:
XS-3XL | 26"

Fabric:
52% Recycled Polyester
40% Polyester, 8% Spandex

Licensed through Lafig Belgium www.smurf.com

TF626 | STITCH TOO COOL (LHAY)




Size:
XS-3XL | 26"

Fabric:
52% Recycled Polyester
40% Polyester, 8% Spandex

© Disney

TF788 | ICONIC FRIENDSHIP (MKXB)






Size:
XS-5XL | 28"

Fabric:
52% Recycled Polyester
40% Polyester, 8% Spandex

BLUEY TM and BLUEY character logos TM & © Ludo Studio Pty Ltd 2018. Logo - <https://we.tl/t-fC6FvQaESy>

xxxxx | THE SEA IS CALLING (MHIS)

Size:
XS-3XL | 26"

Fabric:
52% Recycled Polyester
40% Polyester, 8% Spandex

legal here

TF788 | SNOOPY OUTDOORS (PNHK)




Size:
XS-5XL | 28"

Fabric:
52% Recycled Polyester
40% Polyester, 8% Spandex

Add the following with the peanuts logo:
© Peanuts Worldwide LLC

TF796 | COMIC STORY (TSSC)




Size:
XXS-3XL | 26"

Fabric:
52% Recycled Polyester
40% Polyester, 8% Spandex

© Disney

TF796 | YUMMY FREEZE (MKEZ)




Size:
XS-2XL | 24.5"

Fabric:
52% Recycled Polyester
40% Polyester, 8% Spandex

© Disney

xxxxx | MINNIE HAPPY PLACE (MKZL)




Size:
XS-3XL | 26"

Fabric:
52% Recycled Polyester
40% Polyester, 8% Spandex

legal here

xxxxx | EEVORE FIELDS (PHEF)




Size:
XS-3XL | 26"

Fabric:
52% Recycled Polyester
40% Polyester, 8% Spandex

legal here

Tooniforms

xxxxx | HONEY PLAID (PHHY)




Size:
XXS-3XL | 36"

Fabric:
52% Recycled Polyester
40% Polyester, 8% Spandex

[legal here](#)

xxxxx | COOL KINDNESS (PNZL)




Size:
XS-3XL | 26"

Fabric:
52% Recycled Polyester
40% Polyester, 8% Spandex

[legal here](#)

xxxxx | FASHION PRINCESS (PRFX)




Size:
XS-3XL | 26"

Fabric:
52% Recycled Polyester
40% Polyester, 8% Spandex

[legal here](#)

xxxxx | I FOUND A CLUE (SDGA)




Size:
XS-5XL | 28"

Fabric:
52% Recycled Polyester
40% Polyester, 8% Spandex

[legal here](#)

xxxxx | SUNSHINE VIBES (SWDY)




Size:
XXS-3XL | 26"

Fabric:
52% Recycled Polyester,
40% Polyester, 8% Spandex

[Legal here](#)

xxxxx | UP WITH DUG (UPDU)




Size:
XS-2XL | 24.5"

Fabric:
52% Recycled Polyester,
40% Polyester, 8% Spandex

[Legal here](#)



ONE FOR ALL.

BUY LOCAL

Uniform retailers have
everything in store for you.

CHEROKEE[®]

Careismatic Brands
Customer Care: 800.283.7272
M-F, 6 a.m. - 4 p.m. PST
orderinquiry@careismatic.com

Want to place an order online?
Visit CBICentral.com

Need digital assets?
digitalassets@careismatic.com

CHEROKEE[®]
— MEDICAL —
UNIFORMS



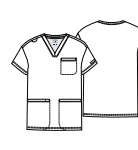
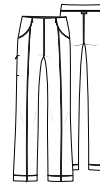
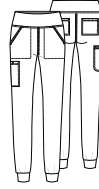
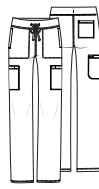
SUMMER 2026

WOMEN'S

BEST SELLER

BEST SELLER

NEW



CK832
V-NECK TOP

CK936
CREW NECK TOP

CK863
V-NECK TUNIC TOP

CK963
TUCK-IN V-NECK TOP

CK096
STRAIGHT LEG PANT

CK033
PULL-ON JOGGER PANT

CK162
PINTUCK WIDE LEG PANT

CK353
ZIP FRONT WARM UP JACKET

CK00037
V-NECK TOP

CK834
TUCK-IN V-NECK TOP

2 POCKETS

1 POCKET

3 POCKETS

1 POCKET

5 POCKETS

5 POCKETS

3 POCKETS

2 POCKETS

3 POCKETS

1 POCKET

Badge loop on neckband
Side vents

Raglan-style sleeveless cut
Badge loop
Cropped hem

Tuck-in design
Side-entry pockets
High-low hem

Crossover neckband
Front yoke
1 Inseam chest pocket

Mid-rise, pull-on waistband
Leg opening, 16"

Mid-rise waistband with internal bungee
Leg opening, 9.5"

Mid-rise, folded elastic waistband
1 Zipper pocket
Leg opening, 9.5"

Stylized knit neckline
Zipper closure
Side-entry pockets

Banded v-neckline
ID badge loop

High-low hemline
Side vents

SIZE:
XXS-5XL | 26"

SIZE:
XXS-5XL | 24"

SIZE:
XXS-5XL | 29"

SIZE:
XXS-5XL | 26"

SIZE:
R: XXS-5XL | 31"
P: XXS-2XL | 28.5"
T: XS-XL | 34"

SIZE:
R: XXS-5XL | 29"
P: XXS-2XL | 26.5"

SIZE:
R: XXS-5XL | 31"
P: XXS-2XL | 28.5"

SIZE:
XXS-5XL | 24"

SIZE:
XS-5XL | 28"

SIZE:
XS-5XL | 28.5"

Black BLKN				T: XS-2XL					
Navy NAVN				T: XS-2XL					
Pewter PWTN				T: XS-2XL					
Royal ROYN				T: XS-2XL					
Wine WINN		N/A				N/A	N/A	N/A	
Ciel CIEN		N/A				N/A	N/A	N/A	
Caribbean Blue CARN		N/A	N/A			N/A	N/A		N/A
Hunter HUNN		N/A				N/A		N/A	
White WHTN		N/A	N/A			N/A	N/A		N/A
Red REDN		N/A				N/A		N/A	

FASHION COLORS

F TRUE CORAL TRCR	N/A	N/A	N/A	F	N/A	N/A	N/A	N/A	N/A
-----------------------------	-----	-----	-----	----------	-----	-----	-----	-----	-----

FASHION SIZES

XS-3XL	N/A	N/A	N/A	R: XS-3XL T: XS-2XL	N/A	N/A	N/A	N/A	N/A
--------	-----	-----	-----	------------------------	-----	-----	-----	-----	-----

FORM

FABRIC:
86% Nylon
14% Spandex Knit

COLLECTION FEATURES:
Moisture Wicking | 360 Stretch Knit
Fabric | Easy Care | Durable

CONTEMPORARY SLIM FIT

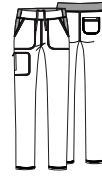
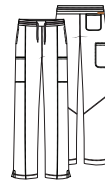
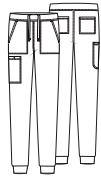
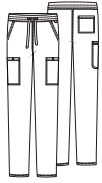
MEN'S

WOMEN'S

BEST SELLER

BEST SELLER

NEW



CK036	CK034	CK00036	CK840	CK819	CK026	CK095	CK092	CK381	CK00032
MID-RISE STRAIGHT LEG PANT	MID-RISE JOGGER	ZIP FRONT JACKET	POWER MESH V-NECK TOP	TUCK IN V-NECK TOP	WIDE LEG TROUSER PANT	MID-RISE TAPERED LEG PANT	MID-RISE JOGGER	ZIP FRONT WARM UP JACKET	ZIP FRONT JACKET
5 POCKETS	5 POCKETS	2 POCKETS	2 POCKETS	1 POCKET	5 POCKETS	5 POCKETS	6 POCKETS	3 POCKETS	2 POCKETS
Mid-rise waistband Adjustable drawstring Leg opening, 17"	Encased elastic waistband Internal drawstring Leg opening, 10.5"	Zipper closure Self knit cuffs and waist Back yoke	Power mesh trim detailing Back princess seams Curved hem	Knit mesh neckline Back princess seams Shirttail hem	Mid-rise waistband Adjustable drawstring Leg opening, 21.5"	Elastic waistband Adjustable drawstring Leg opening, 9.5"	Elastic waistband Secure zipper pockets Leg opening, 9"	Zipper closure Cuffed thumbholes Mesh detailing	Zipper closure Power mesh detailing on sleeves and back
SIZE: R: XS-5XL 32" S: XS-2XL 29.5" T: S-XL 35"	SIZE: R: XS-5XL 30.5" S: XS-2XL 28"	SIZE: XS-5XL 29"	SIZE: XXS-3XL 26"	SIZE: XXS-3XL 25"	SIZE: R: XXS-3XL 31.5" P: XS-XL 29" T: XS-XL 34.5"	SIZE: R: XXS-3XL 29" P: XXS-2XL 26.5" T: XS-2XL 32"	SIZE: R: XXS-3XL 28.5" P: XXS-2XL 26" T: XS-2XL 31.5"	SIZE: XXS-3XL 24.5"	SIZE: XXS-3XL 26"

T: S-2XL			Black BLK						
T: S-2XL			Navy NAV						
T: S-2XL		N/A	Pewter PWT						
T: S-2XL		N/A	Royal ROY					N/A	
		N/A	Wine WIN					N/A	N/A
		N/A	Ciel CIE	N/A				N/A	N/A
	N/A	N/A	Caribbean Blue CAR					N/A	N/A
		N/A	Teal Blue TLB	N/A				N/A	N/A
	N/A	N/A	Hunter Green HUN	N/A				N/A	N/A
		N/A	Galaxy Blue GAB	N/A				N/A	N/A
		N/A	Olive Branch OLBA	N/A				N/A	N/A
			Iron IRON			XS-3XL P: XXS-2XL	XS-3XL P: XS-2XL	N/A	N/A

N/A	N/A	N/A
N/A	N/A	N/A

FASHION COLORS

A Dusty Mauve DTMA	A	A	A	N/A	N/A	A
F Paradise Cove PDCO	F	F	F P: XS-XL	N/A	N/A	F

FASHION SIZES

P: XS-3XL	P: XS-3XL	R: XS-3XL P: XS-XL	R: XS-3XL	N/A	N/A	R: XS-3XL
------------------	------------------	-------------------------------------	------------------	-----	-----	------------------

ALLURA

FABRIC:
90% Polyester
10% Spandex Poplin
CONTEMPORARY FIT

MEN'S

WOMEN'S

BEST SELLER

BEST SELLER

BEST SELLER

CK885	CK112	CK185	CK399	CKA685	CKA684	CKA690	CKA184	CKA190	CKA384
TUCK-IN V-NECK TOP	MID-RISE JOGGER	TAPERED LEG CARGO PANT	ZIP-FRONT JACKET	SHIRTTAIL V-NECK TOP	V-NECK TOP	TUCK-IN V-NECK TOP	MID-RISE TAPERED LEG PANT	MID-RISE RIB-KNIT JOGGER	ROUND-NECK ZIP-FRONT JACKET
1 POCKET	4 POCKETS	5 POCKETS	4 POCKETS	3 POCKETS	3 POCKETS	2 POCKETS	5 POCKETS	5 POCKETS	4 POCKETS
In-seam chest pocket Power mesh inset Back yoke vent	Power mesh, elastic waistband Adjustable drawstring Leg opening, 10.5"	Mid-rise elastic waistband Adjustable side zipper vents Leg opening, 14.5"	Stand-up collar 1 Hidden mesh cell phone pocket 1 Zipper chest pocket	ID badge loop Zip cell phone pocket Shirttail hem Side vents	1 Zip cell phone pocket Front and back princess seams Side vents	1 Back zip pocket Rounded high-low hem Side vents	Elastic waistband Adjustable drawstring Leg opening, 14"	Rib-knit waistband Internal drawstring Leg opening, 9"	Hidden cell phone pocket 1 Back zip pocket Rib-knit cuffs
SIZE: XS-3XL 28"	SIZE: XS-3XL 30.5"	SIZE: XS-3XL 31"	SIZE: XS-3XL 27.5"	SIZE: XXS-5XL 26"	SIZE: XXS-5XL 26"	SIZE: XXS-5XL 26"	SIZE: R: XXS-5XL 29.25" P: XXS-2XL 27" T: XS-2XL 32.25"	SIZE: R: XXS-5XL 28.5" P: XXS-2XL 26" T: XS-2XL 31.5"	SIZE: XXS-5XL 27"

				Black BLK					
				Navy NAV					
				Pewter PWT					
N/A	N/A	N/A	N/A	Royal ROY					
N/A	N/A	N/A	N/A	Wine WIN					
N/A	N/A	N/A	N/A	Ciel CIE					
N/A	N/A	N/A	N/A	Caribbean Blue CAR					
N/A	N/A	N/A	N/A	Teal Blue TLB					
N/A	N/A	N/A	N/A	Hunter Green HUN					N/A
N/A	N/A	N/A	N/A	Galaxy Blue GAB					N/A
N/A	N/A	N/A	N/A	White WHT	N/A	N/A		N/A	
N/A	N/A	N/A	N/A						

N/A	N/A	N/A	N/A
N/A	N/A	N/A	N/A
N/A	N/A	N/A	N/A



INFINITY PURSUIT

FABRIC:
79% Nylon, 21%
CONTEMPORARY FIT

COLLECTION FEATURES:
360° Stretch Knit Fabric | Moisture Wicking
PROTX2 Odor Protection

WOMEN'S MEN'S

NEW					NEW				
IN00033	IN00034	IN00037	IN024A	IN023A	IN025A	IN525A	IN651A	IN00020	IN027A
V-NECK TOP	V-NECK DOLMAN TOP	CREW NECK TOP	MID-RISE JOGGER	MID-RISE STRAIGHT LEG PANT	HIGH-RISE WIDE LEG PANT	WARM UP JACKET	V-NECK TOP	CREW NECK TOP	MID-RISE JOGGER
2 POCKETS	1 POCKET	NO POCKETS	5 POCKETS	4 POCKETS	3 POCKETS	3 POCKETS	3 POCKETS	2 POCKETS	5 POCKETS
ID badge slot Set-in sleeves Front darts	Rib-knit neckline High-low dolphin hem Previously IN650A	Contrast rib-knit trim at neckline Side vents	Mid-rise elastic waistband Adjustable drawstring Leg opening, 9"	Mid-rise elastic waistband with side utility elastic Internal drawstring Leg opening, 18"	Logo elastic waistband 1 Back zipper pocket Leg opening, 22"	High-neckline Long sleeve Elastic cuffs and hem	ID badge slot Set-in sleeves Side vents	Contrast rib-knit trim at neckline Side vents	Elastic waist with side utility elastic Internal drawstring Leg opening, 10.5"
SIZE: XXS-5XL 26"	SIZE: XXS-5XL 24"	SIZE: XXS-5XL 25"	SIZE: R: XXS-5XL 28.5" P: XXS-2XL 26" T: XS-2XL 31.5"	SIZE: R: XXS-5XL 30.5" P: XXS-2XL 27.5" T: XS-2XL 33.5"	SIZE: R: XS-3XL 31" P: XS-XL 28.5"	SIZE: XXS-5XL 24.5"	SIZE: XS-5XL 28"	SIZE: XS-5XL 28"	SIZE: R: XS-5XL 30.5" S: XS-3XL 28" T: S-2XL 33.5"

Black BLKN									
Navy NAVN									
Pewter PWTN									
Royal ROYN					N/A				
Wine WINN		N/A			N/A	N/A		N/A	
Caribbean Blue CARN		N/A			N/A	N/A		N/A	
Olive OLVN	N/A	N/A	N/A		N/A	N/A		N/A	No Short Tall

FASHION COLORS

		N/A				N/A		N/A	
					N/A	N/A	N/A	N/A	N/A

FASHION SIZES

R: XS-3XL	R: XS-3XL	R: XS-3XL	R: XS-3XL P: XS-XL	R: XS-3XL P: XS-XL	R: XS-3XL P: XS-XL	N/A	R: XS-3XL	N/A	R: XS-3XL
-----------	-----------	-----------	-----------------------	-----------------------	-----------------------	-----	-----------	-----	-----------



LIFESTYLE

INFINITY STYLES

FABRIC:
95% Polyester | 5% Spandex Poplin
**CONTEMPORARY AND
MODERN FITS**

WOMEN'S

MEN'S

WOMEN'S

BEST SELLER

BEST SELLER

BEST SELLER

BEST SELLER



IN527A

IN301

IN302

2624A

2625A

CK865A

CK623A

CK742A

1123A

CK110A

**WARM-UP
JACKET**

**CROPPED
FULL ZIP
JACKET**

**HIGH NECK
JACKET**

**KNIT BACK
ROUND
NECK TOP**

**KNIT BACK
MOCK-WRAP
TOP**

**V-NECK
TOP**

**RIB-KNIT
WAIST V-NECK
TOP**

**HIGH-LOW
MOCK-NECK
TOP**

**LOW-RISE
STRAIGHT
LEG PANT**

**MID-RISE
RIB-KNIT
JOGGER**

3 POCKETS

2 POCKETS

2 POCKETS

3 POCKETS

4 POCKETS

2 POCKETS

3 POCKETS

4 POCKETS

4 POCKETS

5 POCKETS

High-neckline
1 Zipper chest
pocket
Elastic cuffs
and hem

High neck
Dolman sleeves
with rib-knit
cuffs
Rib-knit
waistband

High neck with
half zip closure
Rib-knit cuffs
Slightly curved
hem

ID badge loop
Rib-knit back
panel
1 Hidden
accessory
pocket

Rib-knit back
panel
1 Interior
pocket
Side vents

Rib-knit collar
Pencil stitch
Side vents

Rib-knit waist
insets and back
panel
1 Interior
pocket
Shirttail hem

Dolman sleeves
Rib-knit back
panel
1 Hidden utility
pocket

Elastic knit
waistband with
drawstring
Adj. bungee
cord hemline
Leg opening, 18"

Rib-knit elastic
waistband
Angled zipper
hip pockets
Leg opening,
12.5"

SIZE:
XS-5XL | 27"

SIZE:
XS-3XL | 22.5"

SIZE:
S-3XL | 27"

SIZE:
XXS-5XL | 26"

SIZE:
XXS-5XL | 26"

SIZE:
XXS-5XL | 26"

SIZE:
XXS-5XL | 26"

SIZE:
XS-3XL | 27.5"

SIZE:
R: XXS-5XL | 31"
P: XXS-2XL | 28.5"
T: XS-2XL | 34"

SIZE:
R: XXS-5XL | 28.5"
P: XXS-2XL | 26"
T: XS-2XL | 31.5"

			Black BAPS							
			Navy NYPS							
			Pewter PWPS							
	N/A	N/A	Royal RYPS							
N/A	N/A	N/A	Wine WNPS			N/A				No Tall
N/A	N/A	N/A	Ciel CIPS				N/A			No Tall
N/A	N/A	N/A	Caribbean Blue CAPS			N/A				No Tall
			Teal Blue TLPS			N/A	N/A			No Tall
N/A			Hunter Green HNPS		N/A	N/A	N/A			No Tall
N/A			Galaxy Blue GAB		N/A	N/A	N/A			No Tall
			White WTPS				N/A			No Tall
N/A			Eggplant EGG		N/A	N/A	N/A			N/A
			Grey GRY		N/A	N/A	N/A			N/A
			Khaki KAK		N/A	N/A	N/A			No Tall
			Olive OLPS		N/A	N/A	N/A			No Tall
			Red RED		N/A	N/A	N/A			No Tall
			Carmine Pink CPPS		N/A	N/A	N/A			No Tall
			Grape GRP		N/A	N/A	N/A			N/A
			Turquoise TRQ		N/A	N/A	N/A			N/A

FASHION COLORS

	Scuba Blue SABE	N/A	N/A	N/A	N/A		N/A
--	--------------------	-----	-----	-----	-----	--	-----

FASHION SIZES

XS-3XL	N/A	N/A	N/A	N/A	R: XS-3XL P: XS-XL	N/A
--------	-----	-----	-----	-----	-----------------------	-----

CHEROKEE®

— AUTHENTIC —
WORKWEAR



SUMMER 2026

WOMEN'S

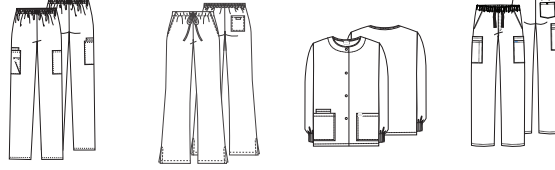
MEN'S

UNISEX

BEST SELLER



BEST SELLER



4700	WW645	WW650	4200	4101	4350	4000	4777	4876	4100
DOLMAN SLEEVE V-NECK TOP	RIB KNIT V-NECK TOP	MOCK-WRAP V-NECK TOP	TAPERED LEG CARGO PANT	FLARE LEG DRAWSTRING PANT	SNAP FRONT WARM UP JACKET	FLY FRONT CARGO PANT	TUCK-IN V-NECK TUNIC	V-NECK TOP	DRAWSTRING CARGO PANT
3 POCKETS	3 POCKETS	3 POCKETS	4 POCKETS	3 POCKETS	3 POCKETS	7 POCKETS	1 POCKET	3 POCKETS	3 POCKETS
Traditional fit Cell phone pocket Side vents	Contemporary fit Hidden instrument loop Rib knit back panels	Rib-knit side panels Hidden instrument loops Side vents	Natural-rise elastic waist Cell phone pocket Leg opening, 15.5"	Natural-rise elastic waist Adjustable drawstring Leg opening, 20.5"	Round neckline Dye-to-match front snaps Knit cuffs	Natural-rise elastic waist Adjustable drawstring Leg opening, 18"	Dolman sleeves Pencil slot on chest pocket	Banded v-neckline Side vents	Natural-rise waist Adjustable drawstring Leg opening, 18.5"
SIZE: XXS-5XL 26.5"	SIZE: XXS-5XL 27"	SIZE: XXS-5XL 26"	SIZE: R: XS-5XL 30.5" P: XS-3XL 27.5" T: XS-2XL 33.5"	SIZE: R: XXS-3XL 31" P: XXS-2XL 28.5" T: XXS-3XL 34"	SIZE: XXS-5XL 27.5"	SIZE: R: S-5XL 31" S: S-3XL 28.5" T: S-2XL 36"	SIZE: XXS-5XL 27.5"	SIZE: R: XXS-5XL 29" T: XS-5XL 32"	SIZE: R: XXS-5XL 31" S: XS-3XL 28.5" T: S-2XL 34"

Black BLKW									R: XXS-7XL
Navy NAVW									
Pewter PWTW								No Tall	
Royal ROYW								No Tall	
Wine WINW								No Tall	
Ciel CIEW								No Tall	
Caribbean Blue CARW								No Tall	
Teal Blue TLBW						No Short Tall		No Tall	
Hunter Green HUNW								No Tall	
Galaxy Blue GABW						No Short Tall		No Tall	
White WHTW						No Tall		No Tall	
Eggplant EGGW	N/A	N/A				No Short Tall		N/A	
Grey GRYW	N/A	N/A	No Tall			No Short		No Tall	
Khaki KAKW	N/A	N/A		N/A	N/A	N/A	N/A	N/A	
Olive OLVW	N/A	N/A	No Tall			No Short Tall		No Tall	
Red REDW						No Short Tall		No Tall	
Shocking Pink SHPW	N/A	N/A		N/A	N/A	N/A	N/A	N/A	N/A
Grape GRPW	N/A	N/A				No Short Tall		No Tall	
Turquoise TRQW	N/A	N/A		N/A	N/A	N/A	N/A	N/A	
Surgical Green SGRW	N/A	N/A	No Petite Tall	N/A	N/A	N/A		N/A	No Short Tall
Lime Green LMGW	N/A	N/A	N/A	N/A	N/A	N/A	N/A	N/A	N/A
Orchid ORCW	N/A	N/A				N/A	N/A	N/A	N/A
Chocolate CHCW	N/A	N/A	No Petite Tall	N/A	N/A	N/A		N/A	No Short Tall

WORKWEAR ORIGINALS
ULTRA

FABRIC:
100% Polyester Twill
MODERN CLASSIC FIT

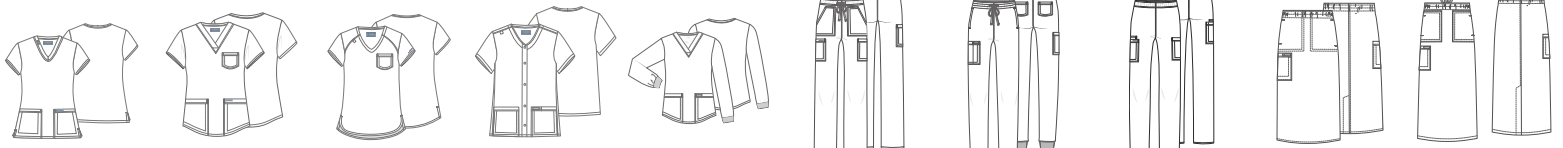
COLLECTION FEATURES:
Two-Way Stretch | Odor Control
Select styles are offered in sizes up to 6XL

WOMEN'S

BEST SELLER

BEST SELLER

NEW



CK953A	CK961A	CK954A	CK844A	CK962A	CK272A	CK00034A	CK281A	CK563A	CK564A
V-NECK TOP	SHIRTTAIL HEM V-NECK TOP	TUCK-IN V-NECK TOP	SNAP FRONT V-NECK TOP	LONG SLEEVE MODESTY TOP	STRAIGHT LEG CARGO PANT	KNIT CUFF JOGGER	MID-RISE CARGO PANT	ELASTIC WAIST PULL-ON SKIRT	ELASTIC WAIST MAXI SKIRT
2 POCKETS	3 POCKETS	1 POCKET	2 POCKETS	2 POCKETS	4 POCKETS	4 POCKETS	3 POCKETS	3 POCKETS	3 POCKETS
ID badge loop on neck Side vents Special sizing in select colors	Decorative top stitching Shirttail hem Special sizing in select colors	ID badge loop Curved high-low hem Side vents	Snap front closure ID badge loop	Long sleeves with knit cuffs Shirttail hem	Mid-rise elastic waist Special sizing in select colors Leg opening, 18.5"	Flat front waist with internal drawstring Special sizing in select colors Leg opening, 12.5"	Elastic waistband Special sizing in select colors Leg opening, 16"	Encased elastic waistband Single back vent	Pull-on, elastic waistband Internal drawstring Single back vent
SIZE: XXS-5XL 26"	SIZE: XXS-5XL 26"	SIZE: XXS-5XL 26"	SIZE: XXS-5XL 26.5"	SIZE: XXS-6XL 26"	SIZE: R: XXS-5XL 31" P: XXS-2XL 28.5" T: XS-2XL 34"	SIZE: R: XXS-5XL 28.5" P: XXS-2XL 26" T: XS-2XL 31.5"	SIZE: R: XXS-5XL 31" P: XXS-2XL 28.5" T: XS-2XL 34"	SIZE: XXS-5XL 30"	SIZE: XXS-5XL 36"

Black BLK XXS-6XL	XXS-6XL		XXS-6XL		XXS-6XL	XXS-6XL	XXS-6XL		
Navy NAV XXS-6XL	XXS-6XL		XXS-6XL		XXS-6XL	XXS-6XL	XXS-6XL		
Pewter PWT XXS-6XL	XXS-6XL		XXS-6XL		XXS-6XL	XXS-6XL	XXS-6XL		
Royal ROY XXS-6XL	XXS-6XL		XXS-6XL		XXS-6XL	XXS-6XL No Tall	XXS-6XL		
Wine WIN XXS-6XL	XXS-6XL			N/A	XXS-6XL	XXS-6XL No Tall	XXS-6XL	N/A	N/A
Ciel CIE XXS-6XL	XXS-6XL			N/A	XXS-6XL	XXS-6XL No Tall	XXS-6XL	N/A	N/A
Caribbean Blue CAR			N/A	N/A		No Tall		N/A	N/A
Teal Blue TLB			N/A	N/A		No Petite Tall		N/A	N/A
Hunter Green HUNW			N/A	N/A		No Tall		N/A	N/A
Galaxy Blue GAB			N/A	N/A		No Petite Tall		N/A	N/A
White WHI			N/A	N/A		No Petite Tall			
Eggplant EGGN	N/A	N/A	N/A	N/A		N/A	N/A	N/A	N/A
Grey GRY			N/A	N/A		No Petite Tall	No Petite Tall	N/A	N/A
Khaki KAKC			N/A	N/A		No Petite Tall	No Petite Tall	N/A	N/A
Olive OLVN	N/A	N/A	N/A	N/A		No Petite Tall	No Petite Tall	N/A	N/A
Red REDN			N/A	N/A		No Petite Tall	No Petite Tall	N/A	N/A
Electric Pink EEPK	N/A	N/A	N/A	N/A		No Petite Tall	N/A	N/A	N/A
Grape GRPN			N/A	N/A		No Petite Tall	No Petite Tall	N/A	N/A
Turquoise TRQN	N/A	N/A	N/A	N/A		N/A	N/A	N/A	N/A

FASHION COLORS

Rapture Rose RPRO	N/A	N/A	N/A	N/A		N/A	N/A	N/A	N/A
--------------------------	-----	-----	-----	-----	--	-----	-----	-----	-----

FASHION SIZING

XS-3XL	N/A	N/A	N/A	N/A	R: XS-3XL P: XS-2XL	N/A	N/A	N/A	N/A
--------	-----	-----	-----	-----	------------------------	-----	-----	-----	-----



POWERED BY
PROTX2
FOR ODOR CONTROL

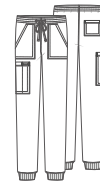
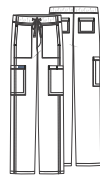
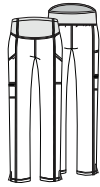
MATERNITY

MEN'S

BEST SELLER

BEST SELLER

NEW



CK512A

CK00013A

CK701A

CK118A

CK783A

CK279A

CK00035A

CK359A

CK778A

CK869A

BUTTON FRONT DRESS

ZIP UP SCRUB JACKET

V-NECK TOP

SLIM LEG PANT

V-NECK TOP

MID-RISE ZIP FLY CARGO PANT

MID-RISE KNIT CUFF JOGGER

ZIP-FRONT WARM UP JACKET

TUCK-IN V-NECK TOP

V-NECK NO POCKET TOP

2 POCKETS

2 POCKETS

2 POCKETS

3 POCKETS

3 POCKETS

6 POCKETS

5 POCKETS

2 POCKETS

1 POCKET

NO POCKETS

Notched collar
8-Button front closure
ID bungee loop

Stand-up knit collar
ID bungee loop
Knit cuffs

Mock-wrap neckline
Stretch-knit side panels

Stretch-knit waistband

ID bungee loop
Decorative topstitching
Special sizing in select colors

Elastic waistband
Special sizing in select colors
Leg opening, 19"

Elastic waistband
Special sizing in select colors
Leg opening, 12.5"

Stand-up collar
ID badge loop
Elastic cuffs
Special sizing in select colors

Tuck-in design
Decorative topstitching

1 Chest pocket
Tuck-in design
Decorative topstitching

SIZE:
XXS-5XL | 42"

SIZE:
XS-3XL | 27"

SIZE:
XXS-5XL | 26.5"

SIZE:
R: XXS-5XL | 30"
P: XXS-2XL | 27.5"
T: XS-2XL | 33"

SIZE:
S-5XL | 28.5"

SIZE:
R: S-5XL | 32"
S: XS-3XL | 29.5"
T: S-2XL | 35"

SIZE:
R: XS-5XL | 30.5"
S: S-3XL | 28"
T: S-2XL | 34"

SIZE:
XS-5XL | 28.5"

SIZE:
XXS-5XL | 28"

SIZE:
XXS-5XL | 27.5"

				Black BLK XS-6XL	XS-6XL	XS-6XL	XS-6XL		
N/A				Navy NAV XS-6XL	XS-6XL	XS-6XL	XS-6XL		
N/A				Pewter PWT XS-6XL	XS-6XL	XS-6XL	XS-6XL		
N/A				Royal ROY XS-6XL	XS-6XL	R: S-5XL S: S-3XL	XS-6XL		N/A
N/A		N/A	N/A	Wine WIN XS-6XL	XS-XL	R: xS-5XL S: S-3XL			N/A
N/A				Ciel CIE XS-6XL	XS-6XL	R: S-5XL S: S-3XL			N/A
N/A		N/A	N/A	Caribbean Blue CAR		No Petite Tall	S-5XL		N/A
N/A		N/A	N/A	Teal Blue TLB		No Petite Tall	N/A		N/A
N/A		N/A	N/A	Hunter Green HUN		No Petite Tall	S-5XL		N/A
N/A				Galaxy Blue GAB		No Petite Tall	S-5XL		N/A
		N/A	N/A	White WHT		No Petite Tall	S-5XL		N/A
N/A	N/A	N/A	N/A	Eggplant EGGN	R: S-5XL S: S-3XL	N/A	N/A		N/A
N/A		N/A	N/A	Grey GRY	R: S-5XL S: S-3XL	N/A	N/A		N/A
N/A		N/A	N/A	Khaki KAKC	R: S-5XL S: S-3XL	N/A	N/A		N/A
N/A		N/A	N/A	Olive OLVN	R: S-5XL S: S-3XL	No Petite Tall	N/A		N/A
N/A		N/A	N/A	Red REDN	R: S-5XL S: S-3XL	N/A	N/A		N/A
N/A	N/A	N/A	N/A	N/A	N/A	N/A	N/A	N/A	N/A
N/A		N/A	N/A	Grape GRPN	R: S-5XL S: S-3XL	N/A	N/A		N/A
N/A	N/A	N/A	N/A	Turquoise TRQN	R: S-5XL S: S-3XL	N/A	N/A		N/A

N/A

N/A

N/A

N/A



CHEROKEE®

WORKWEAR REVOLUTION

FABRIC:
78% Polyester | 20% Rayon | 2% Spandex Twill
MODERN CLASSIC FIT

WOMEN'S

BEST SELLER		BEST SELLER		BEST SELLER		BEST SELLER		
WW620	WW601	WW610	WW612P	WW698	WW120	WW105	WW110	WW115
V-NECK TOP	KNIT V-NECK TOP	MOCK WRAP TOP	PETITE V-NECK TOP	TUCK-IN SNAP FRONT POLO	MID-RISE DRAWSTRING PANT	TAPERED LEG PANT	MID-RISE STRAIGHT LEG PANT	MID-RISE JOGGER PANT
3 POCKETS	2 POCKETS	2 POCKETS	2 POCKETS	1 POCKET	5 POCKETS	5 POCKETS	4 POCKETS	5 POCKETS
Instrument loop Special sizing in select colors Side vents	Knit neckband and side panels Instrument loop Shirttail hem	Front shoulder yokes Instrument loop Special sizing in select colors Side vents	Petite length Princess seams Instrument loops	Collared polo Three-snap closure Knit side panels	Back elastic waistband Moderate flare leg Leg opening, 18.5"	Mid-rise elastic waistband Adjustable drawstring Leg opening, 15"	Knit waistband Special sizing in select colors Leg opening, 18"	Elastic knit waistband Internal drawstring Leg opening, 9.5"
SIZE: XXS-5XL 27"	SIZE: XXS-5XL 26"	SIZE: XXS-5XL 26"	SIZE: P: XXS-3XL 24"	SIZE: XXS-5XL 24"	SIZE: R: XXS-5XL 31" P: XXS-2XL 28.5" T: XS-2XL 34"	SIZE: R: XXS-5XL 31" P: XXS-2XL 28.5" T: XS-2XL 34"	SIZE: R: XXS-5XL 31" P: XXS-2XL 28.5" T: XS-2XL 34"	SIZE: R: XXS-5XL 28.5" P: XXS-2XL 26" T: XS-2XL 31.5"

Black BLK XXS-6XL		XXS-6XL					P: XXS-5XL	
Navy NAV XXS-6XL		XXS-6XL					P: XXS-5XL	
Pewter PWT		XXS-6XL					P: XXS-5XL	
Royal ROY				N/A			P: XXS-5XL	
Wine WIN			N/A				P: XXS-5XL	
Ciel CIE			N/A	N/A			P: XXS-5XL	
Caribbean Blue CAR			N/A	N/A				
Teal Blue TLB			N/A	N/A				No Tall
Hunter Green HUN			N/A	N/A				N/A
Galaxy Blue GAB	N/A		N/A	N/A				N/A
White WHT	N/A		N/A	N/A				N/A
Eggplant EGG	N/A		N/A	N/A				N/A
Grey GRY	N/A		N/A	N/A		N/A		N/A
Khaki KAK	N/A		N/A	N/A		N/A		N/A
Olive OLV	N/A		N/A	N/A		N/A		N/A
Red RED			N/A	N/A				N/A
Electric Pink EEPI	N/A		N/A	N/A		N/A		N/A
Grape GRP	N/A		N/A	N/A				N/A
Turquoise TRQ	N/A		N/A	N/A		N/A		N/A

FASHION COLORS

	N/A		N/A	N/A	N/A	N/A			Cucumber CUCM
--	-----	--	-----	-----	-----	-----	--	--	---------------

FASHION SIZING

XS-3XL	N/A	XS-3XL	N/A	N/A	N/A	N/A	R: XS-3XL P: XS-2XL	R: XS-3XL P: XS-2XL
--------	-----	--------	-----	-----	-----	-----	------------------------	------------------------

COLLECTION FEATURES:

Best for Groups | Two-Way Stretch | Durable | Inclusive Design

Select styles are offered in sizes up to 6XL, with Petite options available up to 5XL

MEN'S

NEW

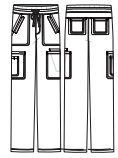
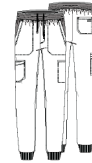
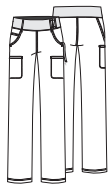
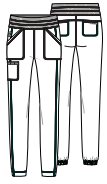
BEST SELLER

BEST SELLER

BEST SELLER

BEST SELLER

NEW



WW011

NATURAL RISE JOGGER PANT

5 POCKETS

Elastic waistband
Flat front, elastic back cuff
Leg opening, 11"

SIZE:

R: XXS-5XL | 29"
P: XXS-2XL | 26.5"
T: XS-2XL | 32"

CK00002

MULTI-POCKET PANT

12 POCKETS

Mid-rise elastic waistband
Adjustable drawstring
Leg opening, 18.5"

SIZE:

R: XS-3XL | 31"
P: S-2XL | 28.5"

WW310

SNAP-FRONT JACKET

3 POCKETS

Interior pocket
Hidden instrument loop
Knit cuffs

SIZE:

XXS-5XL | 27.5"

WW670

V-NECK TOP

3 POCKETS

Pen slot
ID badge loop
Side vents

SIZE:

XS-5XL | 29"

WW690

TUCK-IN V-NECK TOP

1 POCKET

Pen pocket
Back yoke
Side vents

SIZE:

XS-5XL | 29"

WW603

V-NECK TOP

2 POCKETS

Mesh panels at side and back shoulders
Side zipper pocket

SIZE:

XS-5XL | 28.5"

WW251

MID-RISE JOGGER

6 POCKETS

Elastic waistband
Interior drawstring
Leg opening, 10"

SIZE:

R: XS-5XL | 30"
S: XS-3XL | 27.5"
T: S-2XL | 33"

WW140

ZIP-FLY CARGO PANT

7 POCKETS

Back elastic waistband
Internal drawstring
Leg opening, 12"

SIZE:

R: XS-5XL | 32"
S: XS-3XL | 29.5"
T: S-2XL | 35"

WW012

NATURAL RISE JOGGER PANT

5 POCKETS

Elastic waistband
Adjustable drawstring
Leg opening, 19"

SIZE:

R: XS-5XL | 31"
S: XS-3XL | 28.5"
T: S-2XL | 34"

CK00001

MULTI-POCKET STRAIGHT LEG PANT

12 POCKETS

Elastic waistband
Adjustable drawstring
Leg opening, 20"

SIZE:

R: S-5XL | 32"
S: XS-3XL | 29.5"

			Black BLK						
			Navy NAV						
			Pewter PWT						
			Royal ROY						No Short
	No Petite		Wine WIN						No Short
			Ciel CIE						No Short
	No Petite		Caribbean Blue CAR						No Short
	N/A		Teal TLB			N/A		N/A	N/A
	N/A		Hunter Green HUN						N/A
N/A	N/A		Galaxy Blue GAB		N/A	N/A	N/A	N/A	N/A
N/A	N/A		White WHT		N/A			N/A	N/A
N/A	N/A		Eggplant EGG	N/A	N/A	N/A	No Tall	N/A	N/A
N/A	N/A	N/A	Grey GRY		N/A	N/A		N/A	N/A
N/A	N/A		Khaki KAK		N/A	N/A		N/A	N/A
N/A	N/A		Olive OLV		N/A	N/A		N/A	N/A
	N/A		Red RED		N/A	N/A		N/A	N/A
N/A	N/A			N/A	N/A	N/A		N/A	N/A
N/A	N/A		Grape GRP		N/A	N/A		N/A	N/A
N/A	N/A		Turquoise TRQ	N/A	N/A	N/A	No Tall	N/A	N/A

N/A



N/A

N/A

R: XS-3XL
P: XS-2XL

N/A

WORKWEAR PROFESSIONALS

FABRIC:
63% Polyester | 34% Cotton
3% Spandex Poplin

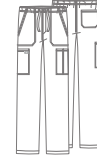
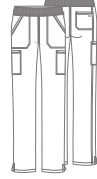
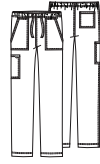
COLLECTION FEATURES:
Best for Groups
No Off-Map Events

MODERN CLASSIC TRADITIONAL FITS

UNISEX

WOMEN'S

MEN'S



WW320

ZIP-FRONT JACKET

5 POCKETS

ID badge loop
Rib-knit cuffs
Back locker loop

SIZE:

XS-5XL | 27"

WW625

TUCK-IN V-NECK TOP

1 POCKET

Pen slot
ID badge loop
Side vents

SIZE:

XXS-5XL | 27.5"

WW020

TAPERED LEG PANT

4 POCKETS

Mid-rise elastic waistband
Adjustable drawstring
Leg opening, 16.5"

SIZE:

R: XXS-5XL | 31"
S: XXS-3XL | 28.5"
T: XS-2XL | 34"

WW665

V-NECK TOP

3 POCKETS

Cell phone pocket
Shirttail hem
Side vents

SIZE:

XXS-5XL | 26"

WW170

STRAIGHT LEG CARGO PANT

6 POCKETS

Mid-rise knit waistband
Internal elastic for a secure fit
Leg opening, 17.5"

SIZE:

R: XXS-5XL | 31"
P: XXS-2XL | 28.5"
T: XS-2XL | 34"

WW340

SNAP FRONT JACKET

3 POCKETS

Cell phone pocket
Dye-to-match front snaps
Knit cuffs

SIZE:

XXS-5XL | 28.5"

WW695

V-NECK TOP

4 POCKETS

Cell phone pocket
Hidden instrument loop
Side vents

SIZE:

R: XS-5XL | 29"
T: XS-2XL | 32"

WW190

ZIP-FLY CARGO PANT

5 POCKETS

Mid-rise elastic waistband
Internal drawstring
Leg opening, 18.5"

SIZE:

R: XS-5XL | 32"
S: XS-3XL | 29.5"
T: S-2XL | 35"

WW360

SNAP-FRONT JACKET

3 POCKETS

Knit collar and cuffs
Silver front snaps
Cell phone pocket

SIZE:

XS-5XL | 30"

			Black BLK					
			Navy NAV					
			Pewter PWT					
			Royal ROY					
N/A			Wine WIN					
N/A			Ciel CIE					
N/A			Caribbean Blue CAR					
N/A	N/A	N/A	Teal Blue TLB		N/A	No Tall		N/A
N/A	N/A	N/A	Hunter Green HUN					
N/A	N/A	N/A	Galaxy Blue GAB			No Tall		
			White WHT					
N/A	N/A	N/A	Grey GRY			No Tall		
N/A	N/A	N/A	Olive OLV			No Tall		
N/A	N/A	N/A	Red RED					
N/A	N/A	N/A	Electric Pink EEPI		N/A	N/A	N/A	N/A
N/A	N/A	N/A						
N/A	N/A	N/A						
N/A	N/A	N/A						
N/A	N/A	N/A						