

MEDCOUTURE



SUMMER 2026

AMP Collection



NEW

MC00018
ZIP-FRONT WIDE LEG JUMPSUIT

Collared neck with front zip closure
Dolman sleeves
4 pockets: 2 front slit pockets, 2 cargo patch pockets

Core Color Sizing: XS-2XL | 31"
Fashion Color Sizing: XS-2XL | 31"

NEW

MC00019
ZIP-FRONT PRINT JUMPSUIT

Collared neck with front zip closure
Dolman sleeves
4 pockets: 2 front slit pockets, 2 cargo patch pockets

Core Color Sizing: XS-2XL | 31"
Fashion Color Sizing: XS-2XL | 31"

Color the town
with confidence.

Sporty, bold, and made to move, the MedCouture AMP collection delivers streetwear-inspired style with performance-level comfort. Featuring ultra-soft stretch fabric and eye-catching details, these scrubs bring serious energy to your everyday rotation.



Model: Shown in Mint Condition (MTCN)

NEW

MC00017
ONE-POCKET DOLMAN
SLEEVE BODYSUIT

One-Pocket Dolman Sleeve Bodysuit Knit brief bottom with 2 snaps
Stylized V-neck top
One chest pocket

Core Color Sizing: XXS-3XL | 30"
Fashion Color Sizing: XS-3XL | 30"

MC102
MID RISE JOGGER PANT

Mid-rise, rib-knit elastic waistband 5 pockets: 2 front pockets, 1 zipper cargo, 2 back pockets
Rib-knit cuffs

Core Color Sizing: R: XXS-3XL | 29",
P: XXS-2XL | 26.5"
Fashion Color Sizing: R: XS-2XL | 29",
P: XS-XL | 26.5"



Mint Condition

MTCN



Model: Shown in Pixel Pink (PXPK)

MC303
TWO-POCKET ZIP-FRONT JACKET

Stand collar
Front stylized princess seams
2 front inseam pockets
Long sleeves with rib-knit cuffs

Core Color Sizing: XXS-3XL | 22.5"
Fashion Color Sizing: XS-2XL | 22.5"

MC104
HIGH-RISE FLARE LEG PANT

Elastic back waistband
Internal drawstring
Rib-knit side panels
4 pockets: 2 front pockets, 1 zipper cargo pocket, 1 back patch pocket

Core Color Sizing: R: XS-2XL | 31",
P: XS-XL | 28.5", T: XS-XL | 34"
Fashion Color Sizing: R: XS-2XL | 31",
P: XS-XL | 28.5"



MC703

TWO-POCKET DOLMAN CREW NECK TOP

Rib-knit trim crew
neckline
Rib-knit back yoke

2 pockets: 1 inseam
zipper pocket, 1 right
shoulder zipper
pocket

Core Color Sizing: XXS-2XL | 25"

Fashion Color Sizing: XS-2XL | 25"

MC102

MID-RISE JOGGER PANT

Mid-rise, rib-knit
elastic waistband
Rib-knit cuffs

5 pockets: 2 front
pockets, 1 zipper
cargo, 2 back pockets

Core Color Sizing: R: XXS-3XL | 29", P: XXS-2XL | 26.5",

Fashion Color Sizing: R: XS-2XL | 29", P: XS-XL | 26.5"

Pixel
Pink

PXPK

Amp Knit Collection



Model: Shown in Cotton Candy Ombre (CTCA)

NEW

MC00021
RUCHED SLEEVE WARM UP PRINT
SCRUB JACKET

Stand collar

Zip-front closure
with logo zipper pull

Ruched inset at
sleeves

2 front welt pockets

Sizing: XS-2XL | 22"

AMP KNIT COLLECTION

*For the ones who show up
ready to stand out.*

MedCouture's AMP Knit Collection fuses bold style with all-day performance. Our ultra-soft stretch knit frames modern details designed to flatter, flex, and move effortlessly with you. Breathability and moisture-wicking comfort keep your focus where it matters, while functional pockets and signature Amp pink detailing deliver the unmistakable edge of the AMP brand.



Model: Shown in Mint Condition (MTCN)

MC752

THREE-POCKET V-NECK TOP

Internal utility loop at wearer's left
Back yoke seams

3 pockets: 2 front patch pockets, 1 chest pocket

Core Color Sizing: XXS-3XL | 23.5"

Fashion Color Sizing: XS-2XL | 23.5"

MC152

FIVE-POCKET HIGH-RISE JOGGER PANT

Extra wide double layered yoga waistband
Internal drawstring

5 pockets: 2 front patch pockets, 2 cargo patch pockets, 1 back patch pocket

Core Color Sizing: R: XXS-3XL | 28.5",
P: XXS-2XL | 26"

Fashion Color Sizing: R: XS-2XL | 28.5",
P: XS-XL | 26"



MC751

TWO-POCKET CREW NECK TOP

Two-Pocket Crew Neck Top

Crew neckline

Amp pink ID bungee at neckline

2 pockets: 1 chest pocket, 1 back zippered security pocket

Core Color Sizing: XS-2XL | 23"

Fashion Color Sizing: XS-2XL | 23"

MC150

FIVE-POCKET HIGH-RISE FLARE LEG PANT

Five-Pocket High-Rise Flare Leg Pant

Extra wide double layered yoga waistband

Internal drawstring

5 pockets: 2 front hip pockets, 2 cargo patch pockets, 1 back waistband zipper pocket

Core Color Sizing: R: XXS-3XL | 31",
P: XXS-2XL | 28.5"

Fashion Color Sizing: R: XS-2XL | 31",
P: XS-XL | 28.5"

Mint
Condition

MTCN

Insight Collection



Model: Shown in Papa Don't Peach (PDPH)

MC2432
ONE-POCKET V-NECK TOP

1 left chest patch pocket

Back yoke with box pleat

Short split sleeve

Core Color Sizing: XS-5XL | 28"

Fashion Color Sizing: XS-3XL | 28"

MC2702
FOUR-POCKET MID-RISE STRAIGHT LEG PANTS

Knit elastic waistband

4 pockets: 2 front vertical zippered pockets, 2 cargo

Core Color Sizing: R: XXS-5XL | 30.5",
P: XS-2XL | 28.5", T: XS-XL | 33"

Fashion Color Sizing: R: XS-3XL | 30.5",
P: XS-2XL | 28.5"

Better Together

Designed for the fashion-forward professional, Insight combines sleek, modern silhouettes with mechanical stretch fabric and soft jersey knit accents for all-day comfort. This season's sunwashed Papa Don't Peach shade adds a bright pop of personality to your rotation.



NEW

MC00009

THREE-POCKET WIDE LEG PANT

Elastic waistband with logo drawstring 3 pockets: 2 front slit pockets, 1 back patch pocket
Contrast piping down side seams

Core Color Sizing: R: XS-3XL | 31", P: XS-2XL | 28.5", T: XS-2XL | 34"

Fashion Color Sizing: R: XS-2XL | 31"



Papa Don't Peach

Papa Don't Peach is available in MC2411, MC2711, and MC00009.
Please reference the product guide for style color availability.

PDPH

Touch Collection



Model: Shown in Midsummer Gold (MDGD)

MC7459 THREE-POCKET V-NECK TOP

Front shoulder yoke
with cover stitching

Overlapping rib-knit
side panels

3 pockets: 2 front
patch pockets, 1 right
outer pocket

Core Color Sizing: XS-5XL | 27"

Fashion Color Sizing: XS-3XL | 27"

MC7739 SEVEN-POCKET STRAIGHT LEG PANTS

Mid-rise, logo
elastic and rib-knit
waistband

Internal drawstring

7 pockets: 2 front
pockets, 2 cargo
pockets, 1 right
internal pocket, 2
back patch pockets

Core Color Sizing: R: XS-5XL | 31",
P: XS-2XL | 29", T: XS-XL | 33.5"

Fashion Color Sizing: R: XS-3XL | 31",
P: XS-XL | 29"

Soft Touch, Bold Performance

Experience the perfect balance of flattering fit and everyday ease with Touch. Crafted from a luxe Rayon-Spandex blend that feels like cotton but moves with modern stretch, this collection embraces every body with extended sizing designed to make you look—and feel—amazing.



MC7448

ONE-POCKET V-NECK TOP

Crossover V-neck Bungee ID loop on
Rib knit inset front right shoulder
shoulder yoke
1 left chest patch
pocket

Core Color Sizing: XS-3XL | 27.5"

Fashion Color Sizing: XS-3XL | 27.5"

MC7710

**FIVE-POCKET YOGA JOGGER
PANTS**

Rib-knit elastic back patch pockets
waistband Rib-knit cuff
5 pockets: 2 front
slash pockets, 1 right
cargo patch pocket, 2

Core Color Sizing: R: XS-5XL | 28.5",
P: XS-2XL | 26.5", T: XS-XL | 31"

Fashion Color Sizing: R: XS-3XL | 28.5",
P: XS-XL | 26.5"



Midsummer Gold

MDGD

Prints Collection



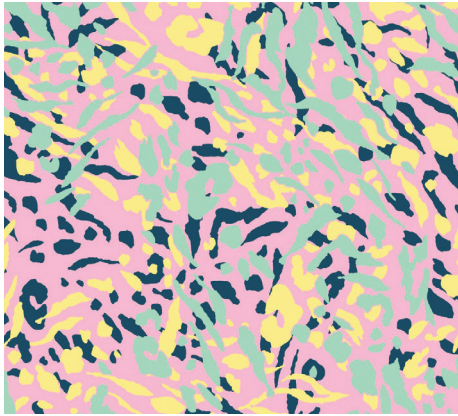
Prints that Pop

Add a splash of fun to your shift with MedCouture's seasonal print tops. From vibrant florals to playful patterns, these styles bring joy and energy to your everyday uniform. Designed to pair seamlessly with our core styles and colors, they let you express your unique vibe while staying comfortable and confident.

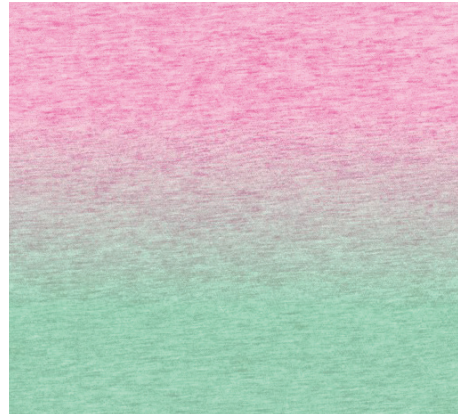
MEDCOUTURE SUMMER 2026



Pixel Pink (PXPk)	Midsummer Gold (MDGD)
Teal (TEAL)	White (WHT)
Caribbean (CARI)	



MC8564 & MC00019 | TUTTI FRUTTI TIGER (TTFT)
MC8564 SIZE: XS-3XL
MC8564 FABRIC: 94% Polyester, 6% Spandex
MC00019 SIZE: XS-2XL
MC00019 FABRIC: 95% Polyester, 5% Spandex Dobby



MC00021 | COTTON CANDY OMBRE (CTCA)
SIZE: XS-2XL
FABRIC: 80% Polyester, 20% Spandex Knit



Black (BLKN)	True Coral (TRCR)
Pewter (PWTN)	White (WHTN)
Rapture Rose (RPRO)	Ciel (CIEN)



Papa Don't Peach (PDPH)	Coral (CRAL)
Coral Fusion (CRFU)	



MC8564 | JUST PEACHY (JSPY)
SIZE: XS-3XL
FABRIC: 94% Polyester/ 6% Spandex



MC632 | LADY LUCK (LDLU)
SIZE: XS-3XL
FABRIC: 94% Polyester, 6% Spandex



Sweet Cream (SCRM)	Royal (ROYL)
Mint Condition (MTCN)	Red (REDD)
Pixel Pink (PXPk)	



Lilac (LILA)	Coral (CRAL)
Coral Fusion (CRFU)	Pink Punch (PKPH)
Taffy Pink (TFPK)	White (WHT)



MC632 | HELLO HIBISCUS (HOHI)
SIZE: XS-3XL
FABRIC: 94% Polyester, 6% Spandex





Careismatic Brands Customer Service

800.283.7272

Mon–Fri. 6AM–4PM PST
orderinquiry@careismatic.com

Want to place
an online order?

VISIT
CBICentral.com

Need digital assets?

EMAIL
digitalassets@careismatic.com



MEDCOUTURE