

CHEROKEE®
— MEDICAL —
UNIFORMS

FALL 2024



FIND



YOUR





“WE”



BECAUSE WE ARE BETTER TOGETHER

Caregivers are a community like no other. But what about those we serve—the ones who inspire us and the countless people who give us hope and purpose? Patients. Physicians. Families. They're a part of us. And together, we're all part of the human family—a collection of lives brought together through circumstances and made stronger through caring.

WORKWEAR REVOLUTION

We've revolutionized the essential healthcare uniform. Revolution is modern, super soft, durable, affordable, and comfortable enough to wear all day long. It's perfect for outfitting small groups or an entire healthcare staff.



ULTRA
SOFT



TWO-WAY
STRETCH



EASY
CARE

FABRIC: 78% POLYESTER / 20% RAYON / 2% SPANDEX TWILL

WW657

Tuckable V-Neck O.R Top
Modern Classic fit
Chest pocket
Front and back yokes
Curved hem
Side vents

Sizes:

XXS-5XL (26")

Fashion Color Sizes:

XS-3XL (26")

Shown in Wine, Navy,
and Pink Essence

Available in 9 Colors



PKES
PINK ESSENCE

WE ARE TIMELESS

Time and again. Over and over. Now and always.

WE'RE TRUSTED THROUGH TIME



WW115

Mid Rise Jogger

Modern Classic fit
Elastic-reinforced knit waistband with interior drawstring
Five pockets: two front patch pockets, double cargo pocket, back patch pocket
Knit cuffs
Tapered leg, 9 1/2" opening

Sizes:

XXS-5XL (28.5")
[P] XXS-2XL (26")
[T] XS-2XL (31.5")

Fashion Color Sizes:

XS-3XL (28.5")
[P] XS-2XL (26")
Shown in Pink Essence
Available in 11 Colors



PKES
PINK ESSENCE

WW620

V-Neck Solid Scrub Top

Modern Classic fit

Three pockets: patch pocket with instrument loop on left, double patch pocket on right

Logo label with bungee loop

Back princess seams

Side vents

XXS-5XL (27")

Fashion Color Sizes:

XS-3XL (27")

Shown in Pink Essence

Available in 21 Colors



PKES
PINK ESSENCE



ATMOS

The ultimate in comfort and performance—made with state-of-the-art performance fabric with COOLMAX® technology, which draws moisture away from the skin for a constant cooling effect. Atmos is easy-care, quick to dry, and engineered to rise to the occasion no matter the temperature.



MOISTURE WICKING



TEMPERATURE REGULATION



TWO-WAY STRETCH



40% RECYCLED POLYESTER

FABRIC: 41% RECYCLED POLYESTER / 36% ECOVERO™ RAYON / 20% COOLMAX POLYESTER / 3% LYCRA SPANDEX

FEATURING

COOLMAX®

COOLMAX® is a trademark of The LYCRA Company

POWERED BY
PROTX2®

WE'RE BREEZY

Never let them see you sweat.

NEW STYLE | CK758A

Draped V-Neck Tuckable Top

Modern Classic fit
Draped neckline
Front entry chest pocket
Center front seam
Center back vent

Sizes:

XS-5XL (25")

Fashion Color Sizes:

XS-3XL (25")

Shown in Mauve Haze

Available in 4 Colors

NEW
COLOR

MVHZ
MAUVE HAZE

CK837A**2-Pocket V-Neck Top**

Contemporary fit
 Stitching detail along neckline
 Two front entry patch pockets
 Knit sleeve panel
 Notch at sleeve hem
 Shirttail hem
 Side vents with patterned twill tape

Sizes:

XXS-5XL (25.5")

Fashion Color Sizes:

XS-3XL (25.5")

Shown in Mauve Haze

Available in 11 Colors

CK093A**Mid Rise Pull-On Cargo Pant**

Contemporary fit
 Flat front with chevron-patterned elastic waistband
 Soft front pleats
 Five pockets: two in-seam pockets, two cargo pockets with pen slots, one front entry back patch pocket
 Moderate flare leg, 20" opening

Sizes:

XXS-3XL (31")

Shown in Mauve Haze

Available in 11 Colors

WE'RE COOL

Crafted to keep you comfortable in any climate (or situation).

NEW
COLOR

MVHZ
 MAUVE HAZE



CK719A

3-Pocket V-Neck Top

Men's fit

Stitching detail along neckline
 Three pockets: welt chest pocket,
 two front entry patch pockets
 Rounded high-low hem

Sizes:

XS-5XL (28.5")

Shown in Ciel

Available in 9 Colors

CK132A

Mid Rise Jogger

Men's fit

Reinforced elastic waistband
 with signature drawstring

Mock fly

Five pockets: two front pockets,
 two front entry cargo pockets,
 back zipper pocket

Knit cuffs

Tapered jogger leg, 10" opening

Sizes:

XS-5XL (29.5")

S: XS-2XL (27")

Shown in Ciel

Available in 9 Colors

See page 13 for White

Mid Rise Zip Fly Cargo Pant



WHT
 WHITE

ATMOS

CK138A

Mid Rise Jogger

Contemporary fit
Elastic-reinforced drawstring waistband
Four pockets: two front pockets, two front entry cargo pockets
Side vents with patterned twill tape
Half knit jogger cuffs
Tapered jogger leg, 9 1/2" opening

Sizes:

XXS-5XL (29")

P: XXS-2XL (26.5")

Fashion Color Sizes:

XS-3XL (29")

P: XS-2XL (26.5")

Shown in Mauve Haze and Pewter

Available in 11 Colors

NEW
COLOR

MVHZ
MAUVE HAZE

12

CHEROKEE UNIFORMS



CK718A**V-Neck Top**

Men's fit
 Knit neckband
 Zippered chest pocket
 High-low hemline
 Side vents with patterned twill tape

Sizes:

XS-5XL (28.5")
 Shown in Pewter
 Available in 8 Colors

CK131A**Mid Rise Zip Fly Cargo Pant**

Men's fit
 Interior elastic waistband with
 inside drawstring
 Zip fly with button closure
 Five pockets: two front
 pockets, front entry cargo
 pocket, two back patch pockets
 Tapered leg, 14" opening

Sizes:

XS-5XL (32")
 [S] XS-2XL (29.5")
 [T] S-XL (35")
 Shown in Pewter
 Available in 9 Colors



WHT
 WHITE





WE FIT WHO YOU ARE

CK356A

Zip Front Jacket

Contemporary fit
Stand-up collar
Two front entry patch pockets
Knit sleeve panel
Shirttail hem

Sizes:

XXS-5XL (26.5")
Shown in Navy
Available in 5 Colors

CK138A

Mid Rise Jogger

Contemporary fit
Elastic-reinforced drawstring waistband
Four pockets: two front pockets, two front entry cargo pockets
Side vents with patterned twill tape
Half knit jogger cuffs
Tapered jogger leg, 9 1/2" opening

Sizes:

XXS-5XL (29")
P: XXS-2XL (26.5")

Fashion Color Sizes:

XS-3XL (29")
P: XS-2XL (26.5")
Shown in Mauve Haze
Available in 11 Colors

NEW
COLOR

MVHZ
MAUVE HAZE



NEW STYLE | CK093A

Mid Rise Pull-On Cargo Pant

Contemporary fit
Flat front with chevron patterned elastic waistband
Soft front pleats
Five pockets: two in-seam pockets, two cargo pockets with pen slots, one front entry back patch pocket
Moderate flare leg, 20" opening

Sizes:

XS-3XL (31")

P: XS-3XL (28.5")

Fashion Color Sizes:

XS-3XL (31")

P: XS-3XL (28.5")

Shown in Mauve Haze

Available in 4 Colors

**NEW
COLOR**

**MVHZ
MAUVE HAZE**

**CK837A****2-Pocket V-Neck Top**

Contemporary fit
Stitching detail along neckline
Two front entry patch pockets
Knit sleeve panel
Notch at sleeve hem
Shirttail hem
Side vents with patterned
twill tape

Sizes:

XXS-5XL (25.5")

Fashion Color Sizes:

XS-3XL (25.5")

Shown in Mauve Haze

Available in 11 Colors

FORM

FORM is the shape of things to come. It's the first of its kind in knit medical apparel. The appearance of woven fabric with endless resilience and incredible recovery of our exclusive Cherokee 360° Stretch technology. Versatile, comfortable, durable, ideal for every healthcare environment



MOISTURE WICKING



TEMPERATURE REGULATION



360° STRETCH

FABRIC: 86% NYLON / 14% SPANDEX KNIT

CK840

2-Pocket V-Neck Top

Contemporary fit

Two welt pockets

Power mesh trim on neck

band and sleeve hems

Back princess seams

Shirrtail hem

Antique-copper hardware

Sizes:

XXS-3XL (26")

Fashion Color Sizes:

XS-3XL (26")

Shown in Masala

Available in 12 Colors

CK819

Tuckable V-Neck Top

Contemporary fit

Power mesh trim on neckband

Welt chest pocket

Back princess seams

Shirrtail hem

Wear tucked or untucked

Antique-copper hardware

Sizes:

XXS-3XL (25")

Fashion Color Sizes:

XS-3XL (25")

Shown in Masala

Available in 8 Colors

NEW
COLOR

MLAS
MASALA

WE ARE BETTER TOGETHER

Exceptional fit for every body type.

CK390

Zip Front Jacket

- Contemporary fit
- Two front zip pockets
- Power mesh insets on sleeves
- Power mesh racerback panel
- Shirttail hem
- Antique-copper hardware

Sizes:

XXS-3XL (26")

Fashion Color Sizes:

XS-3XL (29")

Shown in Masala

Available in 6 Colors

**NEW
COLOR**

**MLAS
MASALA**



CK095**Mid Rise Drawstring Pant**

Contemporary fit
 Five pockets: two angled front pockets, one zip cargo pocket, two back zip pockets
 Encased elastic waistband
 Tapered leg, 9 1/2" opening
 Antique-copper hardware

Sizes:

XXS-3XL (29")
 P: XXS-2XL (26 1/2")
 T: XS-2XL (32")

Fashion Color Sizes:

XS-3XL (29")
 Shown in Masala Available in 12 Colors

**CK092****Mid Rise Jogger**

Contemporary fit
 Interior elastic and drawstring waistband
 Six pockets: two front zip pockets, one back welt pocket, two welt cargo pockets, and one power mesh utility pocket
 Slimming side panels
 Self knit cuffs
 Tapered jogger leg, 9" opening
 Antique-copper hardware

Sizes:

XXS-3XL (28.5")
 P: XXS-2XL (26")
 T: XS-2XL (31 1/2")

Fashion Color Sizes:

XS-2XL (28.5")
 Shown in Masala Available in 7 Colors





NEW STYLE | CK112

Mid Rise Jogger

Men's Contemporary Fit
Elastic-reinforced pull-on waistband with drawstring
Four pockets: two side entry pockets, cargo pocket, back patch pocket
Mesh overlay on waistband and cuffs
Back leg seams
Tapered jogger leg, 10 1/2" opening
Antique-copper hardware

Sizes:

XS-3XL (30.5")

Shown in Pewter

Available in 4 Colors

NEW STYLE | CK812**Quarter-Zip Henley Top**

Men's Contemporary Fit

Rounded neckline with zipper

Three pockets: chest inset pocket,
two side entry patch pockets

Raglan sleeves

Bungee ID badge loop on right
shoulder seam

Antique-copper hardware

Sizes:

XS-3XL (26.5")

Shown in Pewter

Available in 4 Colors

ALLURA

Allura is exclusively designed for our top retailers; this premium scrub collection embodies luxury and sophistication. Elevate your retail experience with Allura, where every detail is crafted to exceed your customers' expectations.



MOISTURE
WICKING



EASY
CARE



360°
STRETCH

FABRIC: 90% POLYESTER / 10% SPANDEX POPLIN

CONTRAST FABRIC: 96% POLYESTER / 4% SPANDEX 2X2 RIB KNIT



WE ARE



GREATER TOGETHER

25

CKA685

3 Pocket V-Neck Top

Contemporary fit
 Three pockets: two front patch pockets, zip cell pocket on the right
 Front and back yoke seams
 Front side panels
 Bungee ID badge loop
 Shirttail hem
 Side vents

Core Color Sizes:

XXS-5XL (26")

Fashion Color Sizes:

XS-3XL (26")

Shown in Aqua Cove and Royal

Available in 12 Colors

CKA184

Mid Rise Drawstring Cargo Pant

Contemporary fit
 Interior elastic waistband
 Five pockets: two angled front pockets, zip cargo pocket, two back pockets
 Forward-wrapping side seam
 Tapered leg, 14" opening

Core Color Sizes:

XXS-5XL (29")

P: XXS-2XL (26.5")

T: XS-2XL (32")

Fashion Color Sizes:

XS-3XL (29")

P: XS-2XL (26")

Shown in Aqua Cove and Royal

Available in 12 Colors



AQCV
AQUA COVE

★ Protected product is never off-MAP (except for Nurses Week) and not sold on Amazon.



UNDERSCRUBS

Lightweight, breathable layering pieces can be worn under tops or on their own for extra comfort and warmth in changing temperature environments.

FABRIC: 92% POLYESTER / 8% SPANDEX JERSEY KNIT



NEW STYLE | CK807

Long Sleeve Underscrub

Knit Tee

Men's Modern fit

Crew neck

Sizes: XS-3XL (27")

Available in 10 Colors

NEW STYLE | CK773

Long Sleeve Underscrub

Knit Tee

Modern Classic fit

Crew neck

Shirrtail hem

Sizes: XS-3XL (24,5")

Available in 14 Colors



PRINTS

From whimsical patterns to trendy designs, our seasonal print scrubs express your personality perfectly while staying professional.

CK691

Night Webs (NTWB)



CK513

Sizes:
XS-5XL
Fabric:
97% Cotton/ 3% Spandex
Coordinating Colors:

Sizes:
OSFM

Black (BLK)	Pewter (PWT)	Grey (GRY)
Olive (OLV)	White (WHT)	

CK637

We Wear Pink (WWPK)



Sizes:
XXS-5XL
Fabric:
52% Recycled Poly/ 40% Poly/ 8% Spandex
Coordinating Colors:

Electric Pink (EPEI)	Khaki (KAK)	Wine (WIN)
Black (BLK)	White (WHT)	

CK671

Space Snacks (SPSC)



Sizes:
XS-3XL
Fabric:
52% Recycled Poly/ 40% Poly/ 8% Spandex
Coordinating Colors:

Black (BLK)	Pewter (PWT)	Teal Blue (TLB)
Electric Pink (EPEI)	Khaki (kak)	White (WHT)

CK637

Dots In Bloom (DTBM)



Sizes:
XS-3XL
Fabric:
52% Recycled Poly/ 40% Poly/ 8% Spandex
Coordinating Colors:

Mauve Haze (MVHZ)	Black (BLK)	White (WHT)
-------------------	-------------	-------------

CK664

Floral Wash (FOWS)



Sizes:
XS-3XL
Fabric:
52% Recycled Poly/ 40% Poly/ 8% Spandex
Coordinating Colors:

Black (BLK)	Wine (WIN)	White (WHT)
-------------	------------	-------------

CK671

Tails Of Love (TALV)



Sizes:
XS-3XL
Fabric:
52% Recycled Poly/ 40% Poly/ 8% Spandex
Coordinating Colors:

Electric Pink (EPEI)	Wine (WIN)	Mauve Haze (MVHZ)
Black (BLK)	White (WHT)	

29

CK664

Crazy For Confetti (CZFC)



CK513

Sizes:
XXS-5XL
Fabric:
52% Recycled Poly/ 40% Poly/ 8% Spandex
Coordinating Colors:

Sizes:
OSFM

Black (BLK)	Galaxy Blue (GAB)	Teal Blue (TLB)
Electric Pink (EPEI)	White (WHT)	

CK651

Shake Your Pom Poms (SYPP)



Sizes:
XS-3XL
Fabric:
97% Cotton/ 3% Spandex
Coordinating Colors:

Navy (NAV)	Royal (ROY)	Hunter Green (HUN)
Red (RED)	Khaki (KAK)	Black (BLK)
White (WHT)		

CK671

On The Go Care (OTGC)



CK514

Sizes:
XXS-5XL
Fabric:
52% Recycled Poly/ 40% Poly/ 8% Spandex
Coordinating Colors:

Sizes:
OSFM

Pewter (PWT)	Black (BLK)	Khaki (KAK)
Teal Blue (TLB)	Electric Pink (EPEI)	White (WHT)

CK637 / CK321

Sleigh My Name (SGMN)



Sizes:
XXS-5XL
Fabric:
52% Recycled Poly/ 40% Poly/ 8% Spandex
Coordinating Colors:

Hunter Green (HUN)	Red (RED)	Electric Pink (EPEI)
Pewter (PWT)	Black (BLK)	White (WHT)

CK637

Snow Cute (SOCU)



Sizes:
XS-5XL
Fabric:
52% Recycled Poly/ 40% Poly/ 8% Spandex
Coordinating Colors:

Teal Blue (TLB)	Turquoise (TRQ)	Electric Pink (EPEI)
Black (BLK)	White (WHT)	

CK637

Take It Cheesy (TKCH)



Sizes:
XS-5XL
Fabric:
52% Recycled Poly/ 40% Poly/ 8% Spandex
Coordinating Colors:

Caribbean (CAR)	Teal Blue (TLB)	Wine (WIN)
Electric Pink (EPEI)	Khaki (KAK)	White (WHT)

CK637

Country Crew (CTCW)



Sizes:
XS-3XL
Fabric:
52% Recycled Poly/ 40% Poly/ 8% Spandex
Coordinating Colors:

Grey (GRY)	Pewter (PWT)	Black (BLK)
Red (RED)	White (WHT)	

CK651

Happy Fall Y'all (HYFY)



Sizes:
XS-3XL
Fabric:
97% Cotton/ 3% Spandex
Coordinating Colors:

Khaki (KAK)	Hunter Green (HUN)	Red (RED)
Black (BLK)	White (WHT)	

CK671

Garden Silhouette (GNSL)



Sizes:
XS-3XL
Fabric:
52% Recycled Poly/ 40% Poly/ 8% Spandex
Coordinating Colors:

Galaxy Blue (GAB)	Black (BLK)	White (WHT)
-------------------	-------------	-------------

CK637

Peace, Love, Smile (PLSM)



Sizes:
XS-5XL
Fabric:
52% Recycled Poly/ 40% Poly/ 8% Spandex
Coordinating Colors:

Black (BLK)	Pewter (PWT)	Turquoise (TRQ)
Electric Pink (EPEI)	White (WHT)	

CK637

Boho Madallion (BHMD)



Sizes:
XS-3XL
Fabric:
52% Recycled Poly/ 40% Poly/ 8% Spandex
Coordinating Colors:

Navy (NAV)	Olive Branch (OLBA)	Teal Blue (TLB)
White (WHT)		

CK671

Soft Paisley (SFPY)



Sizes:
XS-5XL
Fabric:
52% Recycled Poly/ 40% Poly/ 8% Spandex
Coordinating Colors:

Pewter (PWT)	Navy (NAV)	Mauve Haze (MVHZ)
Wine (WIN)	Olive (OLV)	White (WHT)

CK651

Alpacalypse (APYS)



Sizes:

XS-5XL

Fabric:

97% Cotton/ 3% Spandex

Coordinating Colors:

Grape (GRP)	Teal Blue (TLB)	Hunter Green (HUN)	Shocking Pink (SHPK)
Pewter (PWT)	Black (BLK)	White (WHT)	

CK664

Sugar Skull Pups (SUKP)



Sizes:

XXS-5XL

Fabric:

52% Recycled Poly/ 40% Poly/ 8% Spandex

Coordinating Colors:

Black (BLK)	Pewter (PWT)	Eggplant (EGG)	Red (RED)
Royal (ROY)	Teal Blue (TLB)	White (WHT)	

CK637

Abstract Petals (ABPS)



Sizes:

XS-5XL

Fabric:

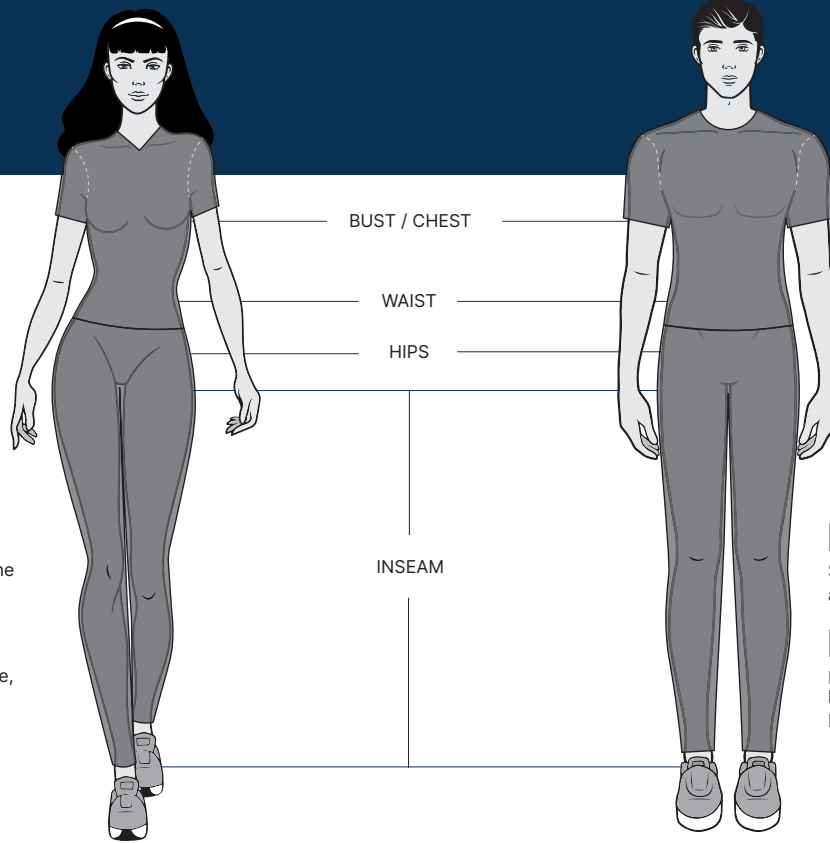
52% Recycled Poly/ 40% Poly/ 8% Spandex

Coordinating Colors:

Olive Branch (OLBA)	Red (RED)	Electric Pink (EPI)
Caribbean (CAR)	White (WHT)	



MEASUREMENT + FIT GUIDE



BUST / CHEST

Measure under the arms, around the fullest part of the bust / chest.

WAIST

Measure under the natural waistline, loosely holding the tape measure.

HIPS

Standing with feet together, measure around the fullest part of the hips.

INSEAM

Measure along the inside of the leg, from just below the crotch to 1" below the ankle.

WOMEN'S FITS



TRADITIONAL CLASSIC

Cut for maximum comfort



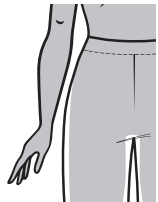
MODERN CLASSIC

Contours the body with ease

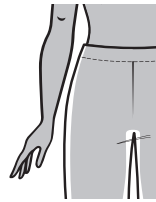


CONTEMPORARY

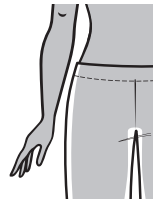
Contoured to your curves



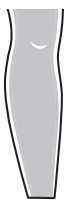
NATURAL RISE



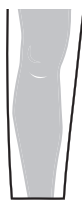
MID RISE



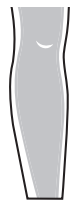
LOW RISE



JOGGER



STRAIGHT

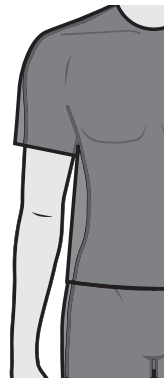


TAPERED



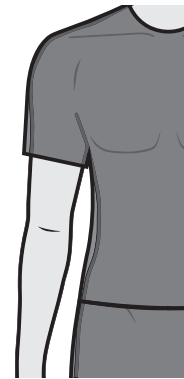
FLARE

MEN'S FITS



CLASSIC

Relaxed for ultimate comfort

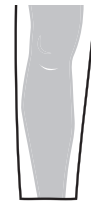


ATHLETIC

Tapered cut for a sleek silhouette



NATURAL RISE



CLASSIC



ATHLETIC

SIZE CHARTS

Use this chart to determine your size. If one of your measurements is between two sizes, order the smaller size for a tighter fit or the larger size for a looser fit. If your measurements for hips and waist correspond to two different suggested sizes, order the one indicated by your hip measurement.

WOMEN'S TRADITIONAL CLASSIC FIT/MATERNITY FIT

	XXS 2	XS 4-6	S 8-10	M 12-14	L 16-18	XL 20-22	2XL 24-26	3XL 28-30	4XL 32-34	5XL 34-38
Bust	34-35	36-37	38-39	40-42	43-45	46-48	49-52	53-56	57-60	61-64
Waist	25-26	27-28	29-30	31-33	34-36	37-39	40-43	44-47	48-51	52-55
Hips	34-35	36-37	38-39	40-42	43-45	46-48	49-52	53-56	57-60	61-64
Inseam: Regular 30-31", Petite 27½-28½", Tall 33-34"										

WOMEN'S MODERN CLASSIC FIT

	XXS 0	XS 2-4	S 6-8	M 10-12	L 14-16	XL 18-20	2XL 22-24	3XL 26-28	4XL 30-32	5XL 34-36
Bust	33-34	35-36	37-38	39-41	42-44	45-47	48-51	52-55	56-59	60-63
Waist	25-26	27-28	29-30	31-33	34-36	37-39	40-43	44-47	48-51	52-55
Hips	34-35	36-37	38-39	40-42	43-45	46-48	49-52	53-56	57-60	61-64
Inseam: Regular 30-31", Petite 27½-28½", Tall 33-34"										

WOMEN'S CONTEMPORARY FIT

	XXS 0	XS 2-4	S 6-8	M 10-12	L 14-16	XL 18-20	2XL 22-24	3XL 26-28	4XL 30-32	5XL 34-36
Bust	32-33	34-35	36-37	38-40	41-43	44-46	47-50	51-54	55-58	59-60
Waist	25-26	27-28	29-30	30-32	34-36	37-39	40-43	44-47	48-51	52-55
Hips	33-34	35-36	37-38	39-40	42-44	45-47	48-51	52-55	56-59	61-64
Inseam: Regular 30-31", Petite 27½-28½", Tall 33-34"										

33

MEN'S TRADITIONAL FIT

	XS 2-4	S 6-8	M 10-12	L 14-16	XL 18-20	2XL 22-24	3XL 26-28	4XL 30-32	5XL 34-36
Chest	35-37	38-40	41-43	44-47	48-51	52-55	56-59	60-63	64-67
Waist	28-30	31-33	34-36	33-36	41-44	45-48	49-52	53-56	57-60
Hips	34-36	37-39	40-42	43-46	47-50	51-54	55-58	59-62	63-66
Inseam: Regular 31-32", Short 29-30", Tall 34-35"									

MEN'S MODERN FIT

	XS 2-4	S 6-8	M 10-12	L 14-16	XL 18-20	2XL 22-24	3XL 26-28	4XL 30-32	5XL 34-36
Chest	33-35	36-38	39-41	42-45	46-49	50-53	54-57	58-61	62-65
Waist	26-28	29-31	32-34	35-38	39-41	42-45	46-49	50-53	54-57
Hips	32-34	35-37	38-40	41-44	45-48	49-52	53-56	57-60	61-64
Inseam: Regular 31-32", Short 29-30", Tall 34-35"									

UNISEX TRADITIONAL FIT

	XXS 0	XS 2-4	S 6-8	M 10-12	L 14-16	XL 18-20	2XL 22-24	3XL 26-28	4XL 30-32	5XL 34-36
Chest	32-34	35-37	38-40	41-43	44-47	48-51	52-55	56-59	60-63	64-67
Waist	25-27	28-30	31-33	34-36	37-40	41-44	45-48	49-52	53-56	57-60
Hips	32-34	35-37	38-40	41-43	44-47	48-51	52-55	56-59	60-63	64-67
Inseam: Regular 31-32", Short 29-30", Tall 34-35"										

UNISEX MODERN FIT

	XXS 0	XS 2-4	S 6-8	M 10-12	L 14-16	XL 18-20	2XL 22-24	3XL 26-28	4XL 30-32	5XL 34-36
Chest	30-32	33-35	36-38	39-41	42-45	46-49	50-53	54-57	58-61	62-65
Waist	23-25	26-28	29-31	32-34	35-38	39-41	42-45	46-49	50-53	54-57
Hips	30-32	33-35	36-38	39-41	42-45	46-49	50-53	54-57	58-61	62-65
Inseam: Regular 31-32", Short 29-30", Tall 34-35"										



COLLECTION FEATURES

Moisture Wicking / Temperature Regulation / Two-Way Stretch

WOMEN'S

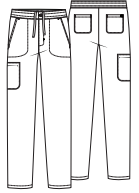
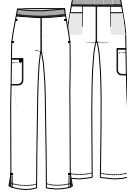
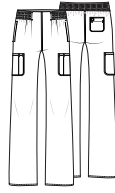
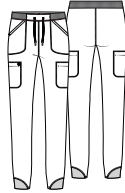
MEN'S

BEST SELLER

NEW

BEST SELLER

NEW



CK837	CK758	CK836	CK138	CK093	CK136	CK356	CK718	CK719	CK131
V-Neck Top	V-Neck Tuck In Top	Stylized V-Neck Tuck In Top	Mid Rise Jogger	Mid Rise Pull-On Pant	Mid Rise Pull-On Cargo Pant	Stand Up Collar Zip Front Jacket	Tuck In V-Neck Top	V-Neck Top	Zip Fly Cargo Pant
3 Pockets	1 Pocket	3 Pockets	4 Pockets	5 Pockets	5 Pockets	2 Pockets	1 Pocket	3 Pockets	5 Pockets
XXS-5XL (25.5")	XS-3XL (25")	XXS-5XL (25.5")	R/ XXS-5XL (29") P/ XXS-2XL (26.5")	R/ XS-3XL (31") P/ XS-2XL (28.5")	R/ XXS-5XL (30.5") P/ XXS-2XL (28") T/ XS-XL (33.5")	XXS-5XL (26.5")	XS-5XL (28.5")	XS-5XL (28.5")	R/ XS-5XL (32") S/ XS-2XL (29.5") T/ S-XL (35")
Black BLK									
Navy NAV									
Pewter PWT									
Royal ROY	N/A			N/A					
Wine WIN	N/A			N/A		N/A			
Caribbean Blue CAR	N/A			N/A		N/A			
Ciel CIE	N/A			N/A					
White WHT	N/A	N/A		N/A	N/A	N/A	N/A		
Teal Blue TLB	N/A			N/A		N/A			
Cool Cucumber CUBR / XS-3XL	N/A	F XS-3XL	F XS-3XL No Petite	N/A	F XS-3XL / P: XS-3XL No Tall	N/A	N/A	N/A	N/A
Mauve Haze MVHZ / XS-3XL	F	N/A	F XS-3XL P: XS-2XL	F	N/A	N/A	N/A	N/A	N/A

COLLECTION FEATURES

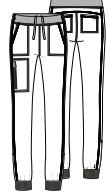
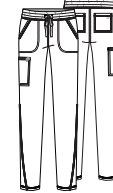
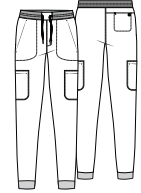
Protected Product / Not on Amazon / Never Off-Map

MEN'S

WOMEN'S

BEST SELLER

BEST SELLER



CK132	CK329	CKA685	CKA672	CKA684	CKA688	CKA690	CKA184	CKA170	CKA190
Mid Rise Jogger	Stand up Collar Zip Front Jacket	Shirttail V-Neck Top	Round Neck Top	V-Neck Top	Mock Wrap Top	Tuck In V-Neck Top	Tapered Leg Drawstring Pant	Mid Rise Jogger	Mid Rise Rib Knit Jogger
5 Pockets	3 Pockets								
R/ XS-5XL (29.5") S/ XS-2XL (27")	XS-5XL (29")	XXS-5XL (26")	XS-3XL (25")	XXS-5XL (26")	XXS-5XL (26")	XXS-5XL (26.5")	R/ XXS-5XL (29") P/ XXS-2XL (26.5") T/ XS-2XL (32")	R/ XS-3XL (29") P/ XS-2XL (26")	R/ XXS-5XL (28.5") P/ XXS-2XL (26") T/ XS-2XL (31.5")
		Black BLK							
		Navy NAV							
		Pewter PWT							
		Royal ROY	N/A					N/A	
	N/A	Wine WIN	N/A					N/A	
	N/A	Caribbean Blue CAR	N/A					N/A	
	N/A	Ciel CIE	N/A					N/A	
N/A	N/A	White WHT	N/A	N/A		N/A		N/A	N/A
	N/A	Hunter Green HUN	N/A		N/A			N/A	
N/A	N/A	Teal Blue TLB	N/A		N/A			N/A	
N/A	N/A	Galaxy Blue GAB	N/A		N/A			N/A	
		Glacier Pearl GLPR / XS-3XL	N/A	N/A	N/A	N/A	XS-3XL No Petite or Tall	N/A	N/A

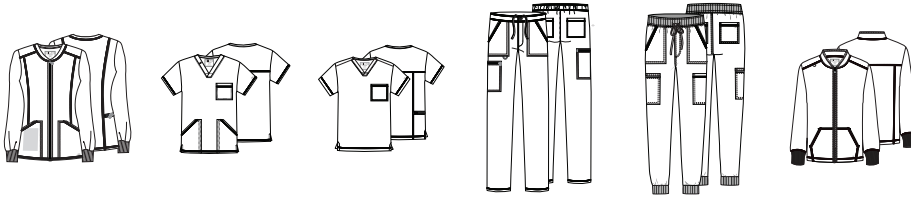
COLLECTION FEATURES

Moisture-Wicking / Stretch Knit Fabric

WOMEN'S

MEN'S

WOMEN'S



BEST SELLER



CKA384	CKA686	CKA689	CKA186	CKA189	CKA387	CK840	CK819	CK843
Round Neck Zip Front Jacket	V-Neck Top	Tuck In V-Neck Top	Fly Front Cargo Pant	Mid Rise Jogger	Zip Front Jacket	Power Mesh V-Neck Top	Tuck In V-Neck Top	Stylized V-Neck Top
4 Pockets	3 Pockets	2 Pockets	5 Pockets	6 Pockets	2 Pockets	2 Pockets	1 Pocket	2 Pockets
XXS-5XL (27")	XS-5XL (28")	XS-5XL (28")	R/ XS-5XL (32") S/ XS-2XL (29.5") T/ XS-2XL (35")	R/ XS-5XL (30.5") S/ XS-2XL (28") T/ XS-2XL (33.5")	XS-5XL (28")	XXS-3XL (26")	XXS-3XL (25")	XXS-3XL (26")
						Black BLK		
						Navy NAV		
						Pewter PWT		
						Royal ROY		
						Wine WIN		
						Caribbean Blue CAR		N/A
					N/A	Ciel CIE	N/A	N/A
		N/A		N/A		Hunter Green HUN	N/A	N/A
N/A					N/A	Teal Blue TLB	N/A	N/A
					N/A	Olive Branch OLBA	N/A	N/A
N/A					N/A	Iron IRON / XS-3XL	XS-3XL	N/A
N/A	N/A	N/A	N/A	N/A	N/A	Masala MLAS / XS-3XL	XS-3XL	N/A

WOMEN'S

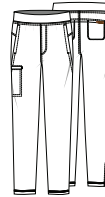
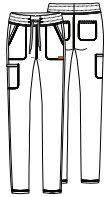
MEN'S

BEST SELLER

NEW

NEW

NEW



CK095	CK092	CK390	CK812	CK885	CK112	CK185	CK333	CK399
Mid Rise Drawstring Pant	Women's Mid Rise Jogger	Mock Neck Zip Front Jacket	Quarter Zip Henley Top	Tuck In V-Neck Top	Mid Rise Jogger	Tapered Leg Cargo Pant	Stretch Knit Zip Front Jacket	Zip Front Jacket
5 Pockets	6 Pockets	2 Pockets	3 Pockets	1 Pocket	4 Pockets	5 Pockets	3 Pockets	4 Pockets
R/ XXS-3XL (29") P/ XXS-2XL (26.5") T/ XS-2XL (32")	R/ XXS-3XL (28.5") P/ XXS-2XL (26") T/ XS-2XL (31.5")	XXS-3XL (26")	XS-3XL (26.5")	XS-3XL (28")	XS-3XL (30.5")	XS-3XL (31")	XS-3XL (27")	XS-3XL (27.5")
				N/A		N/A		N/A
		N/A	N/A	N/A	N/A	N/A	N/A	N/A
	N/A	N/A	N/A	N/A	N/A	N/A	N/A	N/A
	N/A	N/A	N/A		N/A		N/A	N/A
	N/A	N/A	N/A	N/A	N/A	N/A	N/A	N/A
	N/A	N/A	N/A	N/A	N/A	N/A	N/A	N/A
	N/A	N/A	N/A		N/A		N/A	N/A
XS-3XL / P:XS-2XL No Tall	XS-3XL / P:XS-2XL No Tall	XS-3XL	N/A	N/A	N/A	N/A	N/A	N/A
XS-3XL F No Petite or Tall	XS-3XL F No Petite or Tall	XS-3XL	N/A	N/A	N/A	N/A	N/A	N/A

COLLECTION FEATURES

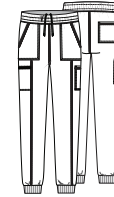
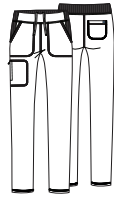
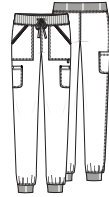
360° Stretch / Moisture Wicking / Strong and Durable

WOMEN'S

MEN'S

BEST SELLER

BEST SELLER



CK749	CK748	CK249	CK248	CK349	CK752	CK824	CK224	CK252	CK394
Snap Front Henley Top	Tuck In V-Neck Top	Natural Rise Jogger	Mid Rise Pull-On Cargo Pant	Zip Front Bomber Jacket	Rib Knit Inset V-Neck Top	Tuck In V-Neck Top	Mid Rise Jogger	Zip Fly Cargo Pant	Stand Up Collar Zip Front Jacket
2 Pockets	1 Pocket	4 Pockets	4 Pockets	2 Pockets	4 Pockets	2 Pockets	5 Pockets	5 Pockets	3 Pockets
XS-3XL (26")	XS-3XL (26")	R/ XS-3XL (29") P/ XS-2XL (26.5") T/ XS-XL (31")	R/ XS-3XL (29.5") P/ XS-2XL (27") T/ XS-XL (32.5")	XS-3XL (22")	XS-3XL (28")	XS-3XL (28")	R/ XS-3XL (30") S/ XS-2XL (27.5") T/ S-XL (33")	R/ XS-3XL (32") S/ XS-2XL (29.5") T/ S-XL (35")	XS-3XL (27.5")
Black BLK									
Navy NAV									
Royal ROY				N/A					N/A
Wine WIN				N/A					N/A
Caribbean Blue CAR			No Petite or Tall	N/A	N/A			N/A	N/A
Ciel CIE				N/A	N/A			N/A	N/A
Heather Pewter HTPT									
N/A	F Vibrant Violet FBVI	F XS-3XL / P: XS-2XL No Tall	F No Tall	N/A	N/A	N/A	N/A	N/A	N/A
N/A	F Mint MXNT	N/A	F No Petite or Tall	N/A	N/A	N/A	N/A	N/A	N/A

LAB COATS

FABRIC: 65 POLYESTER / 35 COTTON BUILT-IN STRETCH TWILL
 VEST: 55 COTTON / 45 POLYESTER POPLIN
 CK402A: 41 RPET / 36 ECOVERO™ / 20 COOLMAX® / 3 LYCRA TWILL

COLLECTION FEATURES

Easy Care / Quality Craftsmanship

WOMEN'S

MEN'S

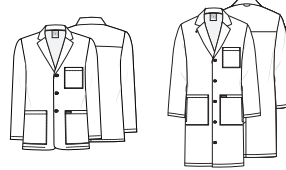
UNISEX

KID'S

BEST SELLER



BEST SELLER



NEW



CK451	CK421	CK452	WW420	1602	CK401	CK412	CK402	CK460	CK430
Consultation Coat	Full Length Lab Coat	Mid-Length Lab Coat	36" Lab Coat	Button Front Vest	Consultation Coat	Mid-Length Lab Coat	Snap Front Lab Coat	Mid-Length Lab Coat	Lab Coat
3 Pockets	3 Pockets	3 Pockets	4 Pockets	2 Pockets	3 Pockets	3 Pockets	3 Pockets	3 Pockets	3 Pockets
R/ XXS-5XL (28") T/ XS-2XL (30")	XXS-5XL (37")	R/ XXS-5XL (33") T/ XS-2XL (35")	XXS-5XL (36")	XS-3XL (29")	R/ XXS-5XL (30") T/ XS-2XL (32")	R/ XXS-5XL (38") T/ XS-2XL (40")	XS-5XL (40")	R/ XXS-5XL (38") T/ S-3XL (40")	S-L (26")
White WHT									
N/A	N/A	N/A	N/A	Black BLK	N/A	N/A		N/A	N/A
N/A	N/A	N/A	N/A	Navy NAV	N/A	N/A	N/A	N/A	N/A
N/A	N/A	N/A	N/A	N/A	N/A	N/A	Pewter PWT	N/A	N/A
N/A	N/A	N/A	N/A	N/A	N/A	N/A	Royal ROY	N/A	N/A
N/A	N/A	N/A	N/A	N/A	N/A	N/A	Ciel Blue CIE	N/A	N/A

COLLECTION FEATURES

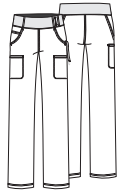
Flexible and Strong / Comfortable and Functional

WOMEN'S

BEST SELLER



BEST SELLER



WOMEN'S

MEN'S

NEW



NEW



CK605	CK002	CK011	CK303
V-Neck Knit Panel Top	Mid Rise Pull-On Pant	Mid Rise Jogger	Zip Front Knit Panel Jacket
4 Pockets	6 Pockets	7 Pockets	2 Pockets
XXS-5XL (26")	R/ XXS-5XL (31") P/ XXS-2XL (28.5") T/ XS-2XL (34")	R/ XXS-3XL (29") P/ XXS-2XL (27.5")	XXS-5XL (26")
Black BLK			
Navy NAV			
Pewter PWT			
Royal ROY			
Wine WIN			
Caribbean Blue CAR			
Ciel Blue CIE			
White WHT		N/A	
Hunter Green HUN		N/A	
Galaxy Blue GAB		N/A	N/A
Red RED	No Petite / No Tall	N/A	N/A
Eggplant EGG	No Petite / No Tall	N/A	N/A

CK773	CK807
Long Sleeve Knit Tee	Long Sleeve Knit Tee
0 Pockets	0 Pockets
XS-3XL (24.5")	XS-3XL (27")
Black BLK	
Navy NAV	
Pewter PWT	
Royal ROY	
Wine WIN	
Caribbean Blue CAR	
Ciel Blue CIE	
White WHT	
Hunter Green HUN	
Galaxy Blue GAB	
Red RED	N/A
Electric Pink EPI	N/A
Turquoise TRQ	N/A
Coral Rush CORU	N/A

WORKWEAR ORIGINALS

FABRIC:
65 POLYESTER / 35 COTTON POPLIN
WHITE: 55 COTTON / 45 POLYESTER POPLIN

COLLECTION FEATURES

Best for Groups / No Off-Map Events

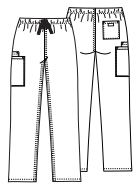
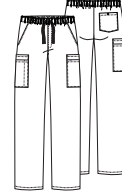
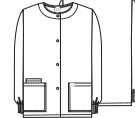
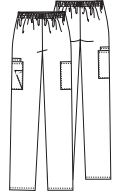
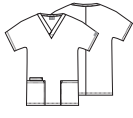
WOMEN'S

MEN'S

UNISEX

BEST SELLER

BEST SELLER



4700	WW645	4881	4200	4101	4350	4000	4777	4876	4100
Dolman Sleeve V-Neck Top	Rib Knit V-Neck Top	Long Sleeve Knit Tee	Tapered Leg Cargo Pant	Flare Leg Drawstring Pant	Snap Front Warm Up Jacket	Fly Front Cargo Pant	Tuck In V-Neck Tunic	V-Neck Top	Drawstring Cargo Pant
3 Pockets	3 Pockets	0 Pockets	4 Pockets	3 Pockets	3 Pockets	7 Pockets	1 Pocket	3 Pockets	3 Pockets
XXS-5XL (26.5")	XXS-5XL (27")	XS-2XL (26")	R/ XS-5XL (30") P/ XS-3XL (27.5") T/ XS-2XL (33")	R/ XXS-3XL (31") P/ XXS-2XL (28.5") T/ XXS-3XL (34")	XXS-5XL (27.5")	R/ S-5XL (31") S/ S-3XL (28.5") T/ S-2XL (36")	XXS-5XL (27.5")	XXS-5XL (29")	R/ XXS-5XL (31") S/ XS-3XL (28.5") T/ S-2XL (34")
Black BLKW									
Navy NAVW									
Pewter PWTW									
Royal ROYW									
Wine WINW									
Caribbean Blue CARW									
Ciel CIEW		N/A							
White WHTW						No Tall			
Hunter Green HUNW		N/A							
Teal Blue TLBW		N/A				No Short / Tall			
Galaxy Blue GABW		N/A				No Short / Tall			
Red REDW						No Short / Tall			
Eggplant EGGW	N/A	N/A				No Short / Tall		N/A	
Olive OLVW	N/A	N/A	No Tall	T: XS-2XL		No Short / Tall			
Grey GRYW	N/A	N/A	No Tall			No Short			
Chocolate CHCW	N/A	N/A	No Petite / Tall	N/A	N/A	N/A		N/A	No Short / Tall
Grape GRPW	N/A	N/A				No Short / Tall			
Khaki KAKW	N/A	N/A				No Tall			
Lime Green LMGW	N/A	N/A	N/A	N/A	N/A	N/A	N/A	N/A	N/A
Orchid ORCW	N/A	N/A		T: XS-2XL	N/A	N/A	N/A	N/A	N/A
Sage Green SAGW	N/A	N/A	N/A	N/A	N/A	N/A	N/A	N/A	N/A
Shocking Pink SHPW	N/A					N/A		N/A	
Surgical Green SGRW	N/A	N/A	No Petite / Tall	N/A	N/A	N/A		N/A	No Short / Tall
Turquoise TROW	N/A					N/A		N/A	

WORKWEAR CORE STRETCH

FABRIC:
55 COTTON / 42 POLYESTER / 3
SPANDEX TWILL

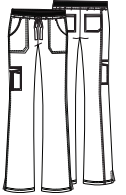
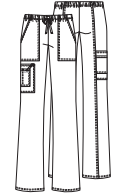
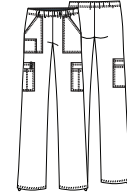
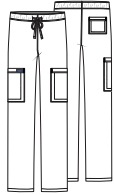
COLLECTION FEATURES

All-Day Comfort / Made-to-Move Flexibility

MEN'S

UNISEX

WOMEN'S



BEST SELLER

BEST SELLER

CK359	CK778	CK280	CK393	4727	4728	WW630	4005	4044	24001
Zip Front Warm Up Jacket	Tuck In V-Neck Top	Mid Rise Drawstring Cargo Pant	Snap Front Warm Up Jacket	V-Neck Top	Mock Wrap Top	V-Neck Top	Mid Rise Pull-On Cargo Pant	Drawstring Cargo Pant	Drawstring Cargo Pant
2 Pockets	1 Pocket	3 Pockets	2 Pockets	3 Pockets	3 Pockets	3 Pockets	7 Pockets	4 Pockets	6 Pockets
S-5XL (28.5")	XXS-5XL (28")	R/ XXS-5XL (31") S/ XXS-3XL (28.5") T/ XS-2XL (34")	XXS-5XL (28.5")	XXS-5XL (27")	XXS-5XL (27")	XXS-5XL (26")	R/ XXS-5XL (31") P/ XXS-2XL (28.5") T/ XS-2XL (34")	R/ XXS-5XL (31") P/ XXS-2XL (28.5") T/ XS-2XL (34")	R/ XXS-3XL (31") P/ XXS-2XL (28.5") T/ XS-2XL (34")
				Black BLKW					
				Navy NAVW					
				Pewter PWTW					
				Royal ROYW					
N/A				Wine WINW					
N/A			N/A	N/A	N/A	Caribbean Blue CARW	N/A	N/A	N/A
N/A				N/A	N/A	Ciel Blue CIEW	N/A	N/A	N/A
N/A			N/A	White WHTW					
N/A			N/A	N/A	N/A	Hunter Green HUNW	N/A	N/A	N/A
N/A			N/A						
N/A			N/A						
N/A	N/A	N/A	N/A						

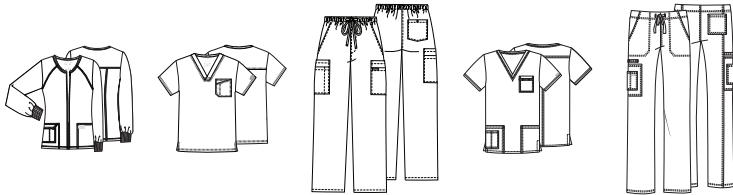
WORKWEAR CORE STRETCH

WORKWEAR REVOLUTION

WOMEN'S

MEN'S

UNISEX



4315	4743	4243	4725	4043
Round Neck Zip Front Jacket	Tuck In V-Neck Top	Zip Fly Cargo Pant	V-Neck Top	Drawstring Cargo Pant
3 Pockets	2 Pockets	7 Pockets	4 Pockets	5 Pockets
XXS-5XL (27")	XS-5XL (29")	XS-5XL (31")	XS-5XL (28")	XS-5XL (31")
N/A	N/A	N/A	N/A	N/A
N/A	N/A	N/A	N/A	N/A
N/A	N/A	N/A	N/A	N/A

COLLECTION FEATURES

Best for Groups / No Off-Map Events

WOMEN'S

BEST SELLER



WW620	WW601	WW610	WW612	WW657
V-Neck Top	Knit V-Neck Top	Mock Wrap Top	Petite V-Neck Top	Tuck In V-Neck Top
3 Pockets	2 Pockets	3 Pockets	2 Pockets	1 Pocket
XXS-5XL (27")	XXS-5XL (26")	XXS-5XL (26")	P/ XXS-3XL (24")	XXS-5XL (26")
Black BLK				
Navy NAV				
Pewter PWT				
Royal ROY				
Wine WIN			N/A	
Caribbean Blue CAR			N/A	
Ciel CIE			N/A	
White WHT	N/A		N/A	N/A
Hunter Green HUN			N/A	N/A
Teal Blue TLB			N/A	
Galaxy Blue GAB	N/A		N/A	N/A
Red RED			N/A	N/A
Eggplant EGG	N/A		N/A	N/A
Olive OLV	N/A		N/A	N/A
Grey GRY	N/A		N/A	N/A
Electric Pink EEP	N/A		N/A	N/A
Grape GRP	N/A		N/A	N/A
Khaki KAK	N/A		N/A	N/A
Turquoise TRQ	N/A		N/A	N/A
Pink Essence PKES / XS-3XL	N/A	N/A	N/A	XS-3XL

WORKWEAR REVOLUTION

WORKWEAR PROFESSIONALS

COLLECTION FEATURES

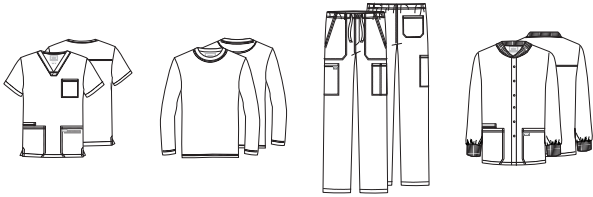
Best for Groups / No Off-Map Events

MEN'S			UNISEX			WOMEN'S		
WW690	WW251	WW140	WW320	WW625	WW020	WW665	WW170	WW340
Tuck In V-Neck Top	Mid Rise Jogger	Zip Fly Cargo Pant	Zip Front Jacket	Tuck In V-Neck Top	Tapered Leg Drawstring Pant	V-Neck Top	Mid Rise Pull-On Cargo Pant	Snap Front Jacket
1 Pocket	6 Pockets	7 Pockets	5 Pockets	1 Pocket	4 Pockets	3 Pockets	6 Pockets	3 Pockets
XS-5XL (29")	R/ XS-5XL (30") S/ XS-3XL (27.5") T/ S-2XL (33")	R/ XS-5XL (32") S/ XS-3XL (29.5") T/ S-2XL (35")	XS-5XL (27")	XXS-5XL (27.5")	R/ XXS-5XL (31") S/ XXS-3XL (28.5") T/ XS-2XL (34")	XXS-5XL (26")	R/ XXS-5XL (31") P/ XXS-2XL (28.5") T/ XS-2XL (34")	XXS-5XL (28.5")
						Black BLK		
						Navy NAV		
						Pewter PWT		
						Royal ROY		
			N/A			Wine WIN		
			N/A			Caribbean Blue CAR		
			N/A			Ciel CIE		
						White WHT		
			N/A	N/A	N/A	Hunter Green HUN		
	N/A		N/A	N/A	N/A	Teal Blue TLB		N/A
	N/A		N/A	N/A	N/A	Galaxy Blue GAB		
	N/A		N/A	N/A	N/A	Red RED		
N/A	N/A	N/A	N/A	N/A	N/A	Olive OLV		
	N/A		N/A	N/A	N/A	Grey GRY		
	N/A		N/A	N/A	N/A	Electric Pink EEPI		N/A
N/A	N/A	N/A	N/A	N/A	N/A			
	N/A		N/A	N/A	N/A			
	N/A		N/A	N/A	N/A			
	N/A		N/A	N/A	N/A			
N/A	N/A	N/A	N/A	N/A	N/A			
N/A	N/A	N/A	N/A	N/A	N/A			

FABRIC:
63 POLYESTER / 34 COTTON / 3 SPANDEX POPLIN

MEN'S

BEST SELLER



WW695	WW700	WW190	WW360
V-Neck Top	Underscrub Knit Tee	Zip Fly Cargo Pant	Snap Front Jacket
4 Pockets	0 Pockets	5 Pockets	3 Pockets
R/ XS-5XL (29") T/ XS-5XL (32")	XS-2XL (29")	R/ XS-5XL (32") S/ XS-3XL (29.5") T/ S-2XL (35")	XS-5XL (30")
	N/A		
	N/A		
	N/A		
	N/A		
	N/A		
No Tall	N/A		N/A
No Tall	N/A		
	N/A		
No Tall	N/A		
No Tall	N/A		
N/A	N/A	N/A	N/A